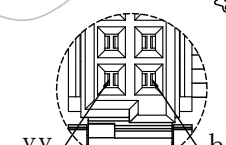
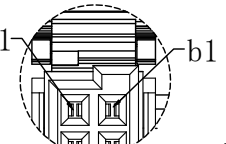
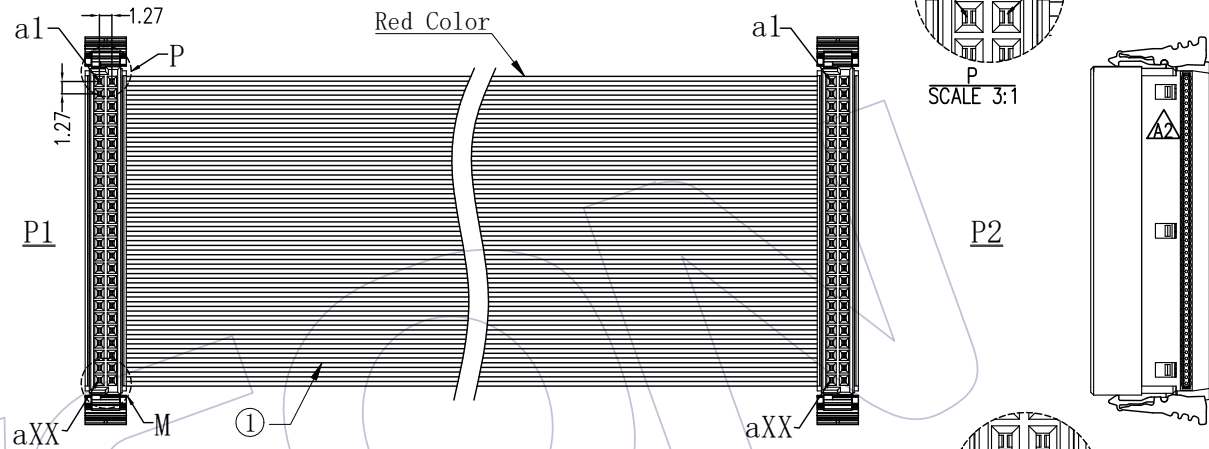
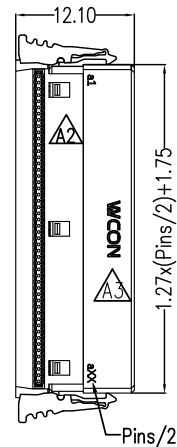


IDC HOUSING MATERIAL  
 Insulation Material: HIGH TEMPERATURE THERMOPLASTIC(UL94V-0)  
 Contact Material: COPPER ALLOY  
 Contact plating: Au or Sn Over Ni  
 SPECIFICATIONS  
 Insulation Resistance: 5MΩ Min  
 Contact Resistance: 1.0Ω Max, 10S  
 Withstand Voltage: AC 300V  
 The Cable Assembly Must 100% Test  
 CABLE MATERIAL  
 Conductor: 30AWG(7/0.1mm)



### Ordering Information

**F3911C - XX XX A B XXX 00X W**

No. OF Pins: 12p, 40p, 16p, 50p, 20p, 68p, 26p, 80p, 32p  
 Contact Plating: S3=Sel.10U" Gold /Tin, S4=Sel.15U" Gold /Tin, S5=Sel.30U" Gold /Tin  
 Conn. Color: B=Black  
 Length of Line: XXX  
 Blank=W/O WCON, W=W/T WCON

#### CONNECT METHOD

P1 Red P2  
 b1 \_\_\_\_\_ b1  
 a1 \_\_\_\_\_ a1  
 b2 \_\_\_\_\_ b2  
 a2 \_\_\_\_\_ a2  
 bXX \_\_\_\_\_ bXX  
 aXX \_\_\_\_\_ aXX

L	TOLERANCE
≤300	±5
>300	±10

WIRE TYPE	PRAT NO.
F1U-A30GXXD0-XXXX-1	F3911C-XXXXABXXX001(W)
F1U-A30XXD0-XXXX-1T	F3911C-XXXXABXXX002(W)

NO.	PART NO.	NAME	TITLE	Q'TY	UNIT
②	3911-0XXUXXW1	CONN.	1.27Pitch SDC IDC XXP HIGH TEMPERATURE THERMOPLASTIC BLACK	2	PCS
①	F1U-A30GXXD0-XXXX-1	WIRE	UL2678 PH0.635mm XXP 30AWG(7/0.1), PVC Grey Red Side	XXX	MM
	F1U-A30XXD0-XXXX-1T	WIRE	PH0.635mm XXP 30AWG(7/0.1), TPE Grey,Red Side	XXX	MM

REV	DATE	MODIFICATION DESCRIPTION	CHANGE	OPERATION	SCALE	DATE	DATE	DATE
A3	2020/11/12	Add W/T WCON LOGO SPEC&P/N	XSR	OPERATION	SCALE	DATE	DATE	DATE
A2	2020/09/09	MODIFY	XSR	x.x ±0.40	UNIT	2020/11/12		
A1	2019/12/05	MODIFY	XSR	x.xx ±0.25	SIZE			
A0	2018/10/10	NEW	Ding	x.xxx ±0.15	SHEET			
				Angle ± 3°	PROJ.			
				DIM TOL				

PART NO.	TITLE
F3911C-XXXXABXXX00X(W)	1.27mm SDC IDC/1.27mm SDC IDC
Customer NO.	

**WCON**  
 Http: www.wcon.com

WCON-Dongguan Tel: +86 769 85358920 Fax: +86 769 85358915 E-mail: sales@wcon.com  
 WCON-Kunshan Tel: +86 512 57468408 Fax: +86 512 57468468 E-mail: sales@wcon.com