

## Specification

1. Current Rating: 1.5AMP
2. Contact Resistance: 30mΩ max
3. Insulation Resistance: 1000MΩ min
4. Dielectric Withstanding Voltage: 500V R.M.S
5. Temperature Rating: -40°C to +85°C

## Mechanical Characteristics:

6. Mating Force: 3.57kg.min
7. Mating Force: 1.02kg.min
8. Durability: Mandatory: 5000 Cycles

Contact: Phosphor Bronze(T=0.20mm)

Insulator: LCP+30%GF(UL94V-0)

Shell: Brass(T=0.30mm)

## Ordering Information

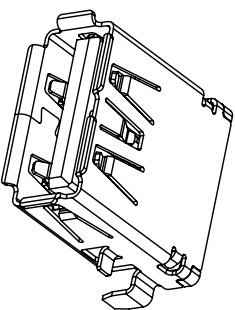
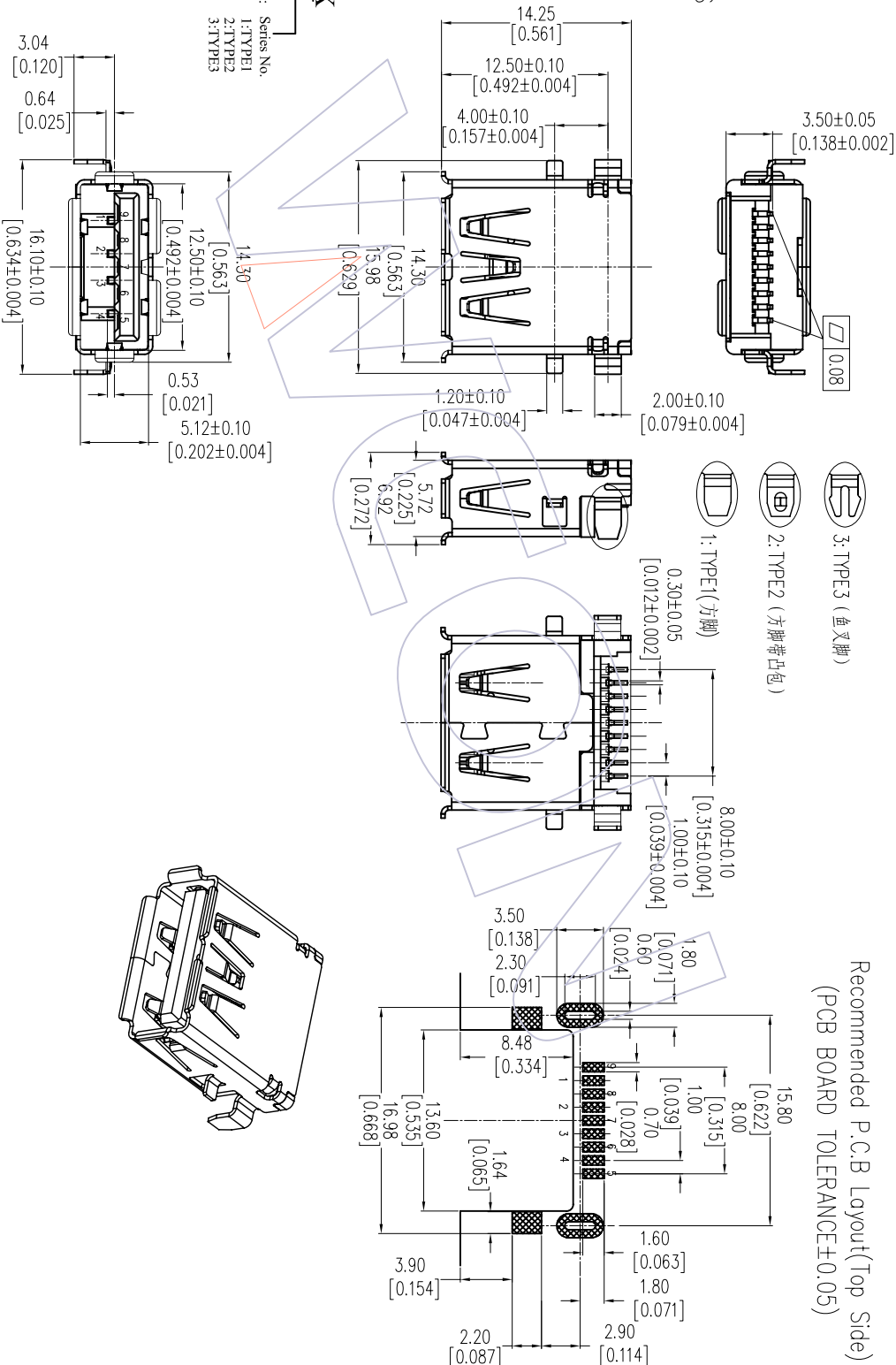
6112-09 A F C M XX UN AX

Series No.  
 1: TYPE1  
 2: TYPE2  
 3: TYPE3

Peaking:  
 A=Tray  
 R=Reel

Plating:  
 B=Black  
 Y=Yellow  
 U=Blue  
 R=Red

Contact Plating:  
 S0=Gold Flash/Tin  
 S1=3u"Gold/Tin  
 S2=5u"Gold/Tin  
 S3=10u"Gold/Tin  
 S4=15u"Gold/Tin  
 S5=30u"Gold/Tin



REV	DATE	MODIFICATION DESCRIPTION	CHANGE	OPERATION	DRAW	DATE	SCALE	FIT	PART NO.	TITLE:	WCON-Dongguan	WCON-Kunshan
A0	2012/06/30	NEW		X.X ±0.40	JYHuang	2012/06/30	mm A4	1/1	6112-09AFCMXXXXMAX	USR3. 0A-TYPE FEMALE 90° SMT SINK STYLE3. 50mm	+86 769 85358920 +86 769 85358915 sales@wcon.com	+86 512 57468408 +86 512 57468468 sales@wcon.com
1				X.XXX ±0.15	CHECK						Http: www.wcon.com	
				Angle ± 3°	APPROVE							