

Specification

1. Current Rating: 1.5AMP at 250V AC
2. Contact Resistance: 30mΩ max
3. Insulation Resistance: 1000MΩ min
4. Dielectric Withstanding Voltage: 500V R.M.S
5. Temperature Rating: -40°C to +85°C

Mechanical Characteristics:

6. Mating Force: 3.57kg/min
7. Mating Force: 1.02kg/min
8. Durability: Mandatory: 5000 Cycles

Contact: Phosphor Bronze(T=0.20mm)

Insulator: LCP+30%GF(UL94V-0)

Shell: SPCC(T=0.30mm)

Ordering Information

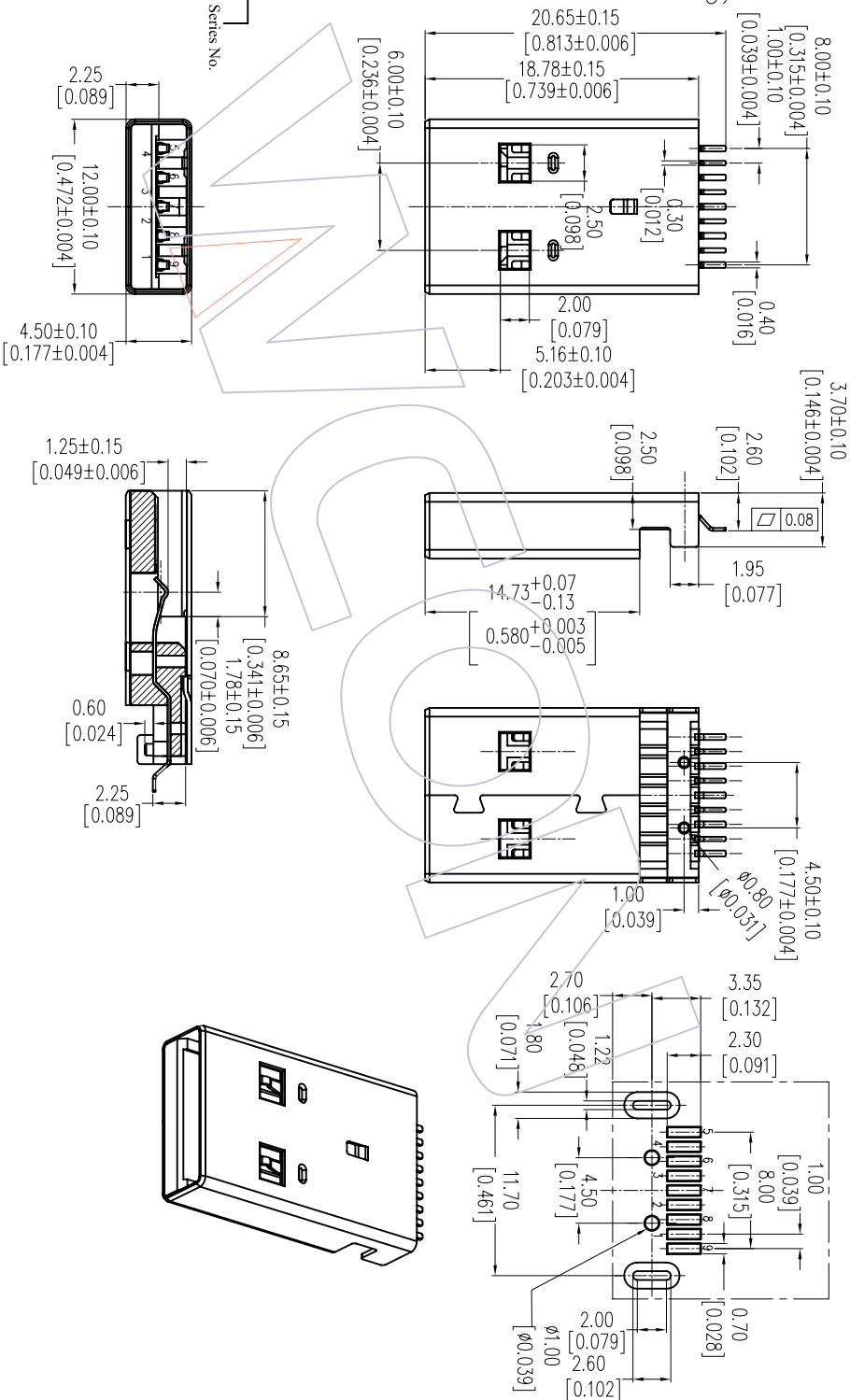
6112-09 AMR MXX UWA2

Contact Plating
 SP=Gold Flash/Tin
 BP=Black
 SI=3u"Gold/Tin
 S2=5u"Gold/Tin
 S3=10u"Gold/Tin
 S4=15u"Gold/Tin
 S5=30u"Gold/Tin

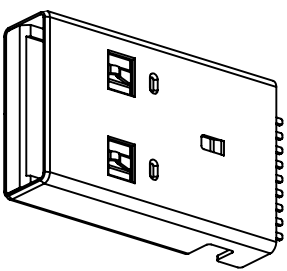
Plating
 B=Black
 U=Blue
 R=Red

Packing:
 A=Tray
 R=Reel

Series No.



Recommended P.C.B Layout(Top Side)
 (PCB BOARD TOLERANCE±0.05)



REV	DATE	MODIFICATION DESCRIPTION	CHANGE	OPERATION	DRAW	DATE	SCALE	FIT	PART NO.	TITLE:	WCN-Dongguan	WCN-Kunshan
A0	2012/06/29	NEW		X.X	JYHuang	2012/06/29	A4	1/1	6112-XXAMRMSXXWA2	USF3. 0A-TYPE PLUG SMT 带0.8柱 2.60mm 铁壳脚长3.7mm	Http: www.wcon.com	
				X.XX	CHECK	DATE	SIZE	SHEET				
				X.XXX	APPROVE	DATE	PROL					
				Angle								
				± 3'								
				DIM								
				TOL								



Tel: +86 769 85358920
 Fax: +86 769 85358915
 E-mail: sales@wcon.com

Tel: +86 512 57468408
 Fax: +86 512 57468468
 E-mail: sales@wcon.com