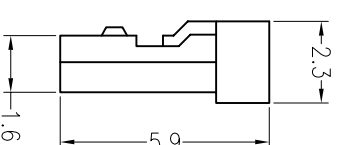
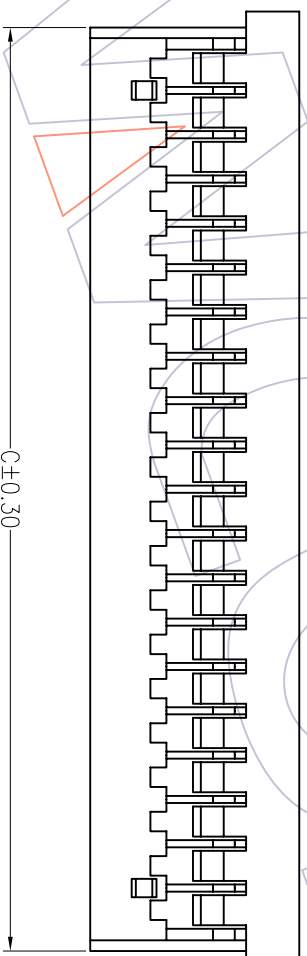
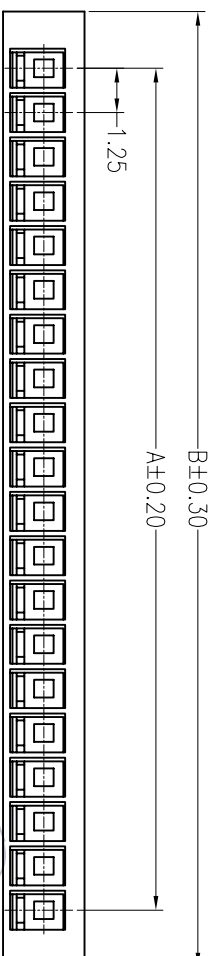


HSF

NOTES:

Rated Current:1.0AMP
 Rated Voltage:150V AC/DC
 Contact Resistance:30mΩ max
 Withstand Voltage:500V AC/Minute
 Insulation Resistance:500MΩ min
 Operation Temperature: -35°C to +85°C
 Insulator Material:PA66 UL94V-0



Ordering Information

WF 1255 - H XX X 0 1

No. of pins
 20=20P
 25=25P
 30=30P

Color
 E=Beige
 W=White

Specification & Ordering Information:

Circuit	Part No.	Dimension			Qty /Reel
		A	B	C	
20	WF1255-H20X01	23.75	26.95	26.05	1,000
25	WF1255-H25X01	30.00	33.20	32.30	1,000
30	WF1255-H30X01	36.25	39.45	38.55	1,000

WCON 维峰五金电子有限公司
 WAFER HARDWARE ELECTRONICS CO. LTD

PART NO. WF1255-HXXX01

TITLE: 1.25 WAFER HOUSING

REV	DATE	MODIFICATION DESCRIPTION	CHANGE	APPROVE	OPERATION	DRAW	William Chen	08.07.19	SCALE	1:1	PART NO.	TITLE:															
A0	08/07/19	NEW			<table border="1"> <tr> <td>X.X</td> <td>±0.25</td> <td>DESIGN</td> <td></td> <td></td> </tr> <tr> <td>X.XX</td> <td>±0.15</td> <td>CHECK</td> <td></td> <td></td> </tr> <tr> <td>X.XXX</td> <td>±0.08</td> <td>APPROVE</td> <td></td> <td></td> </tr> </table>	X.X	±0.25	DESIGN			X.XX	±0.15	CHECK			X.XXX	±0.08	APPROVE						UNIT	mm	WF1255-HXXX01	1.25 WAFER HOUSING
X.X	±0.25	DESIGN																									
X.XX	±0.15	CHECK																									
X.XXX	±0.08	APPROVE																									
					Angle			SIZE	A4																		
					DIM			SHEET	1/1																		
					TOL			PROJ.																			

1 2 3 4 5 6 7 8 9 10