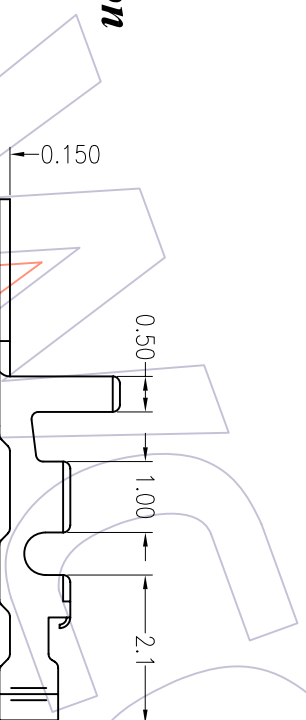
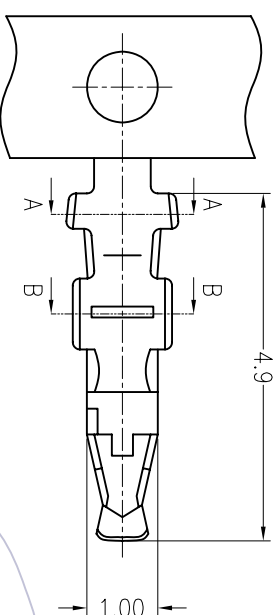


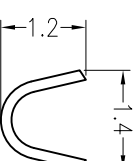
# HSF

**NOTES:**

Rated Current:1.0AMP  
Rated Voltage:150V AC/DC  
Contact Resistance:30mΩ max  
Withstand Voltage:500V AC/Minute  
Insulation Resistance:500MΩ min  
Operation Temperature: -35°C to +85°C



Section A-A



Section B-B

## Ordering Information

WF 1255 - T P **SN 0 1**

- Contact Plating
- G0=Gold Flash
- G1=3u"Gold
- G2=3u"Gold
- G3=10u"Gold
- G4=15u"Gold
- G5=30u"Gold
- S0=Gold Flash/Tin
- S1=3u"Gold/Tin
- S2=5u"Gold/Tin
- S3=10u"Gold/Tin
- S4=15u"Gold/Tin
- S5=30u"Gold/Tin
- SN=Tin

### Specification & Ordering Information:

Part No.	Thickness	Material	Finish	Wire Range	Insulation O.D	Qty/Reel
WF1255-TPSN01	0.15	Phosphor bronze	Tin-Plated	AWG#28-#32	0.90mm Max.	10,000PCS

REV	DATE	MODIFICATION DESCRIPTION	CHANGE	APPROVE	OPERATION		DRAW	SCALE	WCON	
					XXX	±0.25			DESIGN	UNIT
A0	08/07/19	NEW			XXX	±0.13	CHECK <td>A4</td> <td>WF1255-TPXX01</td>	A4	WF1255-TPXX01	
					Angle	± 3'	SHEET	1/1	TITLE:	
					DIM	TOL	PROU.		Customer NO.	

**WCON** 维峰五金电子有限公司  
WAFE HARDWARE ELECTRONICS CO.,LTD

1.25 WAFER TERMINAL