

HSF

Recommended P.C.B Layout (Top Side)
(PCB BOARD TOLERANCE ±0.05)

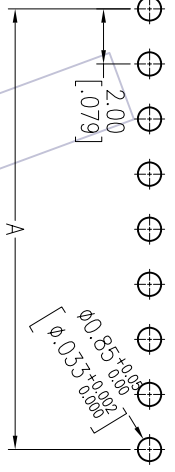
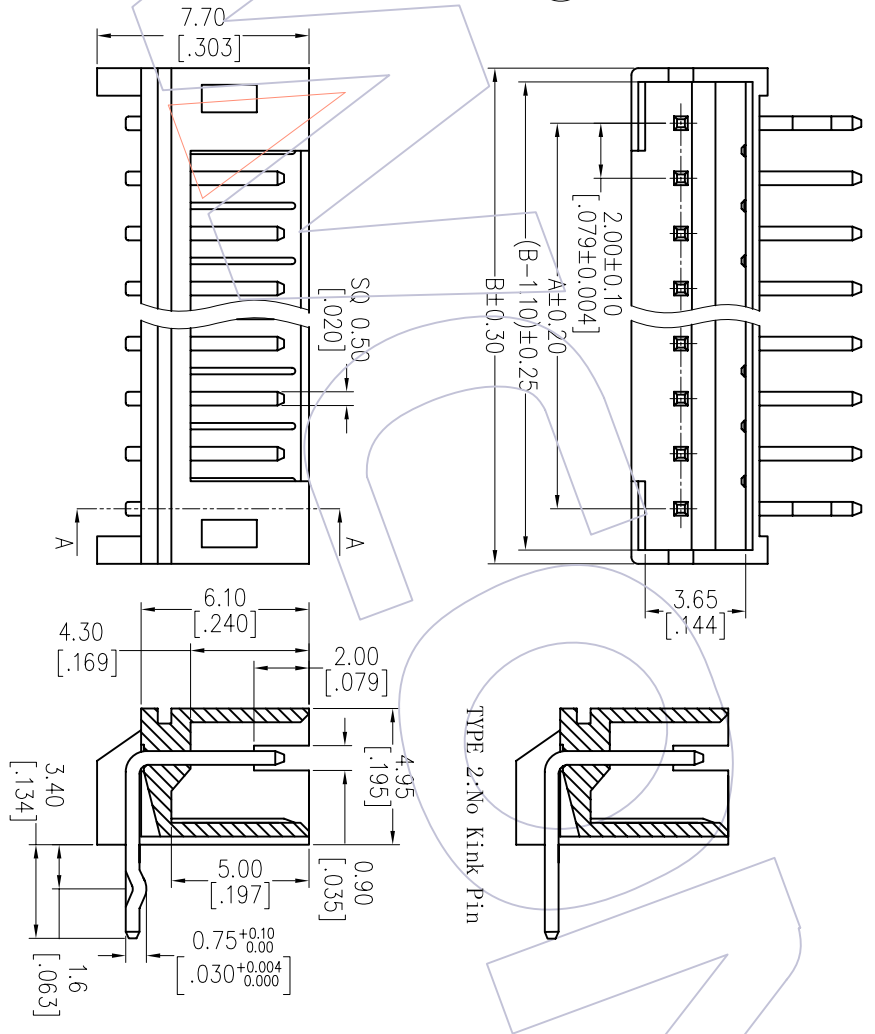
NOTES:
 Current Rating: 1.0A
 Voltage Rating: 100V AC,DC
 Contact Resistance: 20mΩ max
 Withstand Voltage: 800V AC/minute
 Insulation Resistance: 1000MΩ min
 Operation Temperature: -25°C to +85°C

Contact Material: Brass
 Contact plating: Au or Sn Over Ni
 Insulator Material: PA66 Or PA46 (UL94V-0)

Ordering Information

WF2001 - WR H XX X 0 X

H=PA46
 Blank=PA66
 No. of pins S0=Gold Flash/Tin
 02-20P
 S3=10u Gold/Tin
 S4=5u Gold/Tin
 S5=30u Gold/Tin
 G0=Gold Flash
 G3=10u Gold
 G4=5u Gold
 G5=30u Gold
 Blank=Tin
 Contact Plating
 Color
 B=Black
 F=Beige
 W=White
 T=Natural
 Series No.
 1=Type 1
 2=Type 2
 Packing
 O=PE Bag



Circuit	Part No.	Dimension		Q'TY /Bag
		A	B	
02	WF2001 - WR02X0X	2.0	6.0	1,000
03	WF2001 - WR03X0X	4.0	8.0	1,000
04	WF2001 - WR04X0X	6.0	10.0	1,000
05	WF2001 - WR05X0X	8.0	12.0	1,000
06	WF2001 - WR06X0X	10.0	14.0	1,000
07	WF2001 - WR07X0X	12.0	16.0	1,000
08	WF2001 - WR08X0X	14.0	18.0	1,000
09	WF2001 - WR09X0X	16.0	20.0	1,000
10	WF2001 - WR10X0X	18.0	22.0	1,000
11	WF2001 - WR11X0X	20.0	24.0	1,000
12	WF2001 - WR12X0X	22.0	26.0	1,000
13	WF2001 - WR13X0X	24.0	28.0	1,000
14	WF2001 - WR14X0X	26.0	30.0	1,000
15	WF2001 - WR15X0X	28.0	32.0	1,000
16	WF2001 - WR16X0X	30.0	34.0	1,000
17	WF2001 - WR17X0X	32.0	36.0	1,000
18	WF2001 - WR18X0X	34.0	38.0	1,000
19	WF2001 - WR19X0X	36.0	40.0	1,000
20	WF2001 - WR20X0X	38.0	42.0	1,000

REV	DATE	MODIFICATION DESCRIPTION	CHANGE	OPERATION	DRAW	DATE	SCALE	FIT	PART NO.	SHEET	TITLE
A0	2012/08/25	NEW	---	XX	JYHuang	2012/08/25	mm	A4	WF2001 - WR19X0X	1/1	"J" TYPE PH2.0 WAFER 90°
REV	DATE	MODIFICATION DESCRIPTION	CHANGE	OP	DR	DATE	SCALE	FIT	PART NO.	SHEET	TITLE
				XX	JYHuang	2012/08/25	mm	A4	WF2001 - WR19X0X	1/1	"J" TYPE PH2.0 WAFER 90°

[Http: www.wcon.com](http://www.wcon.com)
WCON
 WCON-Dongguan Tel: +86 769 85358920 Fax: +86 769 85358915 E-mail: sales@wcon.com
 WCON-Kunshan Tel: +86 512 57468408 Fax: +86 512 57468468 E-mail: sales@wcon.com