

HSF

NOTES:
 Current Rating: 7.0AMP
 Contact Resistance: 20mΩ Max
 Withstand Voltage: 1500V AC/DC
 Insulation Resistance: 1000MΩ Min
 Operation Temperature: -40°C to +105°C

Contact Material: Brass
 Contact plating: Au or Sn over Ni
 Insulator Material: PA66 UL94V-2(STD)
 or 94V-0 **AA**

Ordering Information

WF3962-WS

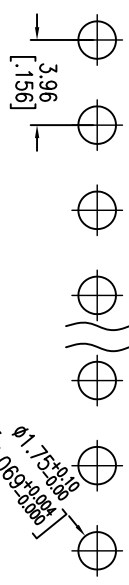
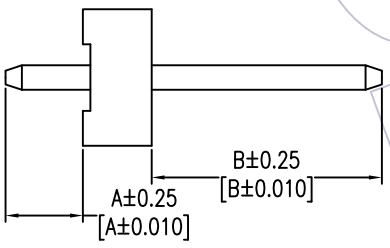
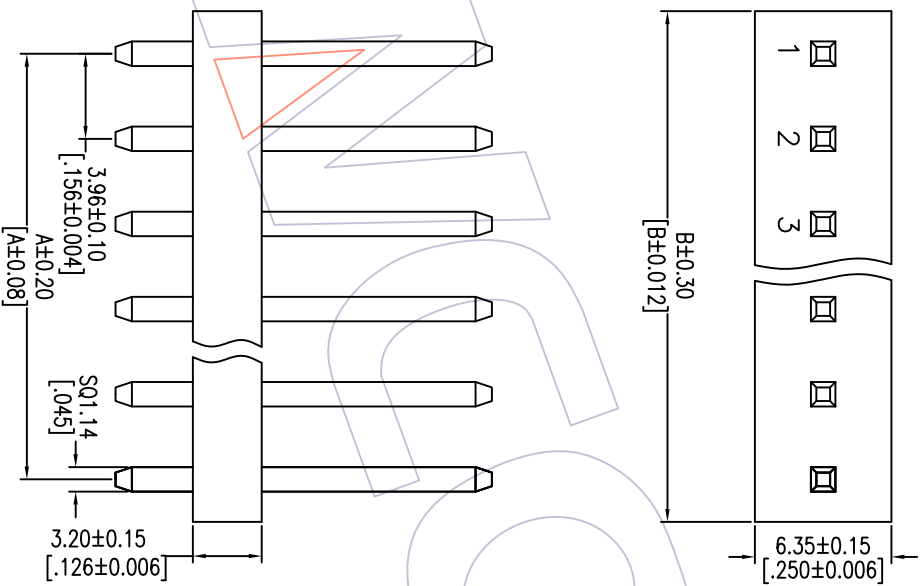
XX

W

0

X

No. of pins
02-24P
 Contact Plating
 GO=Gold Flash
 G3=10u"Gold
 G4=15u"Gold
 G5=30u"Gold
 Blank=Tin
 Color
 W=White
 Packing
 0=PE Bag



Recommended P.C.B. Layout(Top Side)
 (PCB BOARD TOLERANCE±0.05)

Specification & Ordering Information:

Circuit	Part No.	Dimension	
		A	B
02	WF3962-WS02W0X	3.96	7.92
03	WF3962-WS03W0X	7.92	11.88
04	WF3962-WS04W0X	11.88	15.84
05	WF3962-WS05W0X	15.84	19.80
06	WF3962-WS06W0X	19.80	23.76
07	WF3962-WS07W0X	23.76	27.72
08	WF3962-WS08W0X	27.72	31.68
09	WF3962-WS09W0X	31.68	35.64
10	WF3962-WS10W0X	35.64	39.60
11	WF3962-WS11W0X	39.60	43.56
12	WF3962-WS12W0X	43.56	47.52
13	WF3962-WS13W0X	47.52	51.48
14	WF3962-WS14W0X	51.48	55.44
15	WF3962-WS15W0X	55.44	59.40
16	WF3962-WS16W0X	59.40	63.36
17	WF3962-WS17W0X	63.36	67.32
18	WF3962-WS18W0X	67.32	71.28
19	WF3962-WS19W0X	71.28	75.24
20	WF3962-WS20W0X	75.24	79.20
21	WF3962-WS21W0X	79.20	83.16
22	WF3962-WS22W0X	83.16	87.12
23	WF3962-WS23W0X	87.12	91.08
24	WF3962-WS24W0X	91.08	95.04

ITEM	A	B
Standard	3.60	10.7
Alternate		

OPERATION	SCALE	FIT	PART NO.
XX	UNIT	mm	SEE TAB
±0.40	mm	1/1	3.96 WAFER 180°
XX	CHECK	DATE	TITLE:
±0.25	DATE	2016/09/01	3.96 WAFER 180°
XX	APPROVE	DATE	
±0.15	DATE		
Angle	SHEET	PROJ.	Customer NO.
± 3°	1/1		
DIM	TOL		
CHANGE			
MODIFICATION DESCRIPTION			
NEW			
2012/09/15			
2016/09/01			
Modify			
REV	DATE		

WCON

WCON-Dongguan
 Tel: +86 769 85358920
 Fax: +86 769 85358915
 E-mail: sales@wcon.com

WCON-Kunshan
 Tel: +86 512 57468408
 Fax: +86 512 57468468
 E-mail: sales@wcon.com