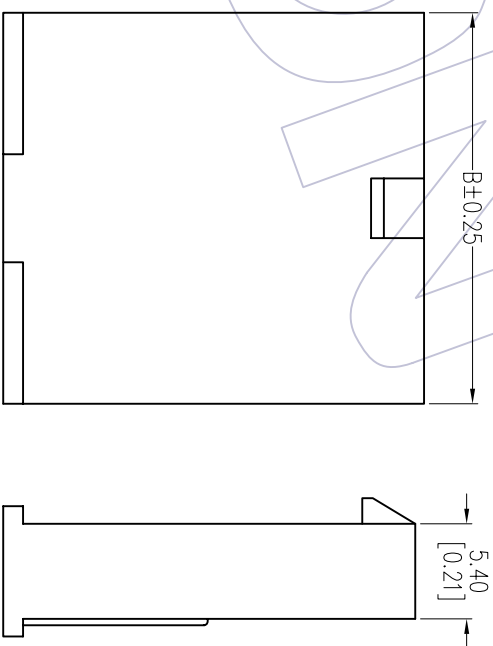
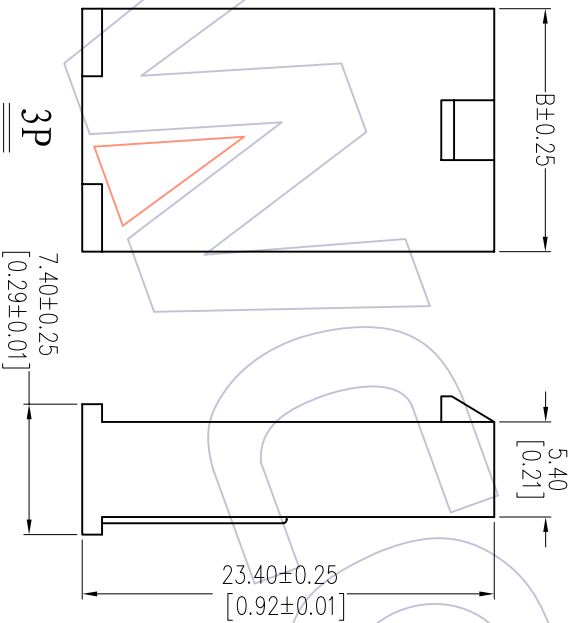
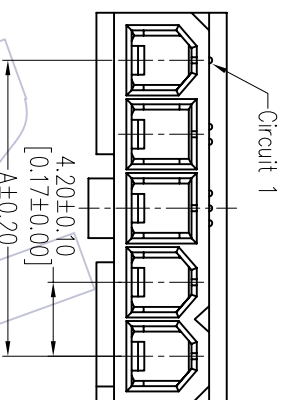
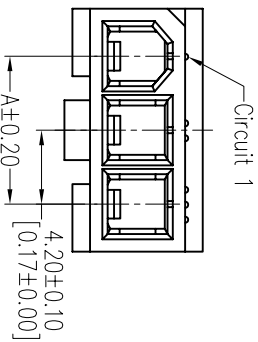


# HSF

### NOTES:

Rated Current: 9.0A  
 Contact Resistance: 20mΩ max  
 Withstand Voltage: 1500V AC/Minute  
 Insulation Resistance: 1000MΩ min  
 Operation Temperature: -25°C to +85°C  
 Insulator Material: PA66 UL94V-0  
 Used with : WF4202-MT(Male Contact)



## Ordering Information

### WF4202-1 H K XX W 02

No.of Row  
Single Row

No.of pins  
02P-05P

Color  
W=White 0=PE Bag  
B=Black

### 2P, 4P, 5P

### Dimensional & Ordering Information

Circuit	Part No.	Dimension	
		A	B
02	WF4202-1HK02W02	4.20	9.60
03	WF4202-1HK03W02	8.40	13.80
04	WF4202-1HK04W02	12.60	18.00
05	WF4202-1HK05W02	16.80	22.20

OPERATION	DRAW	DATE	SCALE	FIT
X.X	JYHuang	2012/09/17	mm	1/1
X.XX	CHECK	DATE	A4	
X.XXX			SHEET	
X.XXX			PROJ.	
Angle	APPROVE	DATE		
± 3'				
DIM				
TOL				

PART NO.	SEE TAB
4.20 HOUSING SINGLE ROW	
Customer NO.	

WCON-Dongguan  
 Tel: +86 769 85358920  
 Fax: +86 769 85358915  
 E-mail: sales@wcon.com

WCON-Kunshan  
 Tel: +86 512 57468408  
 Fax: +86 512 57468468  
 E-mail: sales@wcon.com

# WCON

Http: www.wcon.com

REV	DATE	MODIFICATION DESCRIPTION	CHANGE
A0	2012/09/17	NEW	