

HSF

NOTES:

Current Rating:8A
 Voltage Rating:300V
 Contact Resistance:8milliohm Max
 Withstand Voltage:AC2000V
 Insulation Resistance:1000Mmegohm Min
 Operation Temperature:-40°C to +105°C

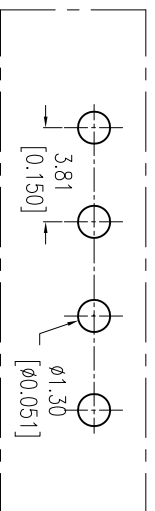
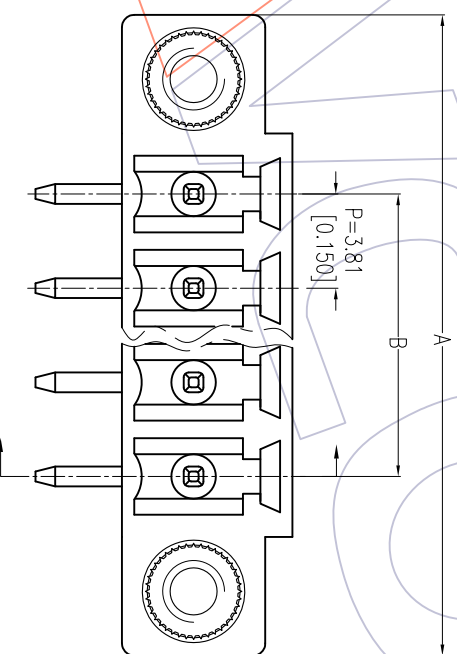
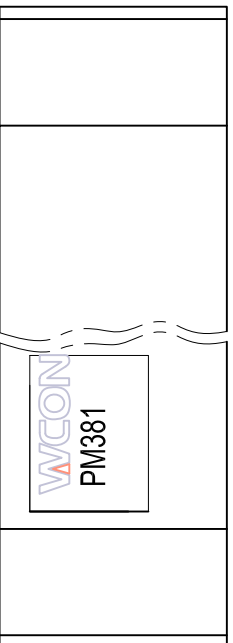
Housing Material:PA66+30%GF(UL94V-0) $\Delta 2$
 Contact Material:Brass
 Inlay Material:Brass

Ordering Information:

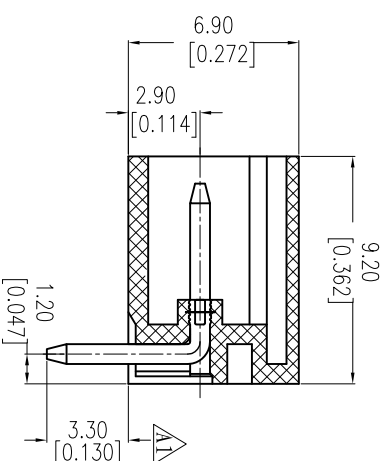
P M 381 - 1 R XX A SM 2
 M=Male Pitch 381=3.81 No. of Pins 02-20P Color A=Green SM=Matte Tm Contact Plated Series No.

11P	51.90 ±0.30	38.10 ±0.30							
10P	48.09 ±0.30	34.29 ±0.30	20P	86.19 ±0.40	72.39 ±0.40				
9P	44.28 ±0.30	30.48 ±0.30	19P	82.38 ±0.40	68.58 ±0.40				
8P	40.47 ±0.30	26.67 ±0.30	18P	78.57 ±0.40	64.77 ±0.40				
7P	36.66 ±0.20	22.86 ±0.20	17P	74.76 ±0.40	60.96 ±0.40				
6P	32.85 ±0.20	19.05 ±0.20	16P	70.95 ±0.40	57.15 ±0.40				
5P	29.04 ±0.20	15.24 ±0.20	15P	67.14 ±0.40	53.34 ±0.40				
4P	25.23 ±0.20	11.43 ±0.20	14P	63.33 ±0.30	49.53 ±0.30				
3P	21.42 ±0.20	7.62 ±0.20	13P	59.52 ±0.30	45.72 ±0.30				
2P	17.61 ±0.20	3.81 ±0.10	12P	55.71 ±0.30	41.91 ±0.30				
位数	A	B	位数	A	B				

ITEM	Pitch	Mating
Standard	3.81	PF381
Alternate		



Recommended P.C.B Layout(Top Side)
 (PCB BOARD TOLERANCE±0.05)



A3	2014/04/15	Modify The Dimension	$\Delta 3$	OPERATION	DRAW	DATE	SCALE	FIT	PART NO.	WCON-Dongguan Http: www.wcon.com	WCON-Kunshan Tel: +86 512 57468408 Fax: +86 512 57468468 E-mail: sdesks@wcon.com
A2	2013/06/05	Modify The Housing Material	$\Delta 2$	XX	Allen	2014/04/15	mm	inch	PM381-1RXXASM2		
A1	2013/04/24	Modify The Dimension 3.50 To 3.30	$\Delta 1$	X.XX	CHECK	DATE	SIZE	A4	TITLE: 3.81mm Pitch Male Pluggable Terminal Blocks	WCON-Dongguan Tel: +86 769 85358920 Fax: +86 769 85358915 E-mail: sdes@wcon.com	
A0	2012/05/16	NEW		X.XXX	APPROVE	DATE	SHEET	1/1	Customer NO.		
REV	DATE	MODIFICATION DESCRIPTION	CHANGE	Angle DIM	TOL						

WCON

WCON-Dongguan
 Tel: +86 769 85358920
 Fax: +86 769 85358915
 E-mail: sdes@wcon.com

WCON-Kunshan
 Tel: +86 512 57468408
 Fax: +86 512 57468468
 E-mail: sdesks@wcon.com