

# HSF

**NOTES:**

Current Rating: 3.0AMP  
 Contact Resistance: 20mΩ Max  
 Withstand Voltage: 1000V AC/DC  
 Insulation Resistance: 1000MΩ Min  
 Operation Temperature: -40°C to +105°C

Contact Material: Phosphor Bronze  
 Contact plating: Au Or Sn over Ni  
 Insulator Material: PA9T+30%G.F UL94V-0

## Ordering Information

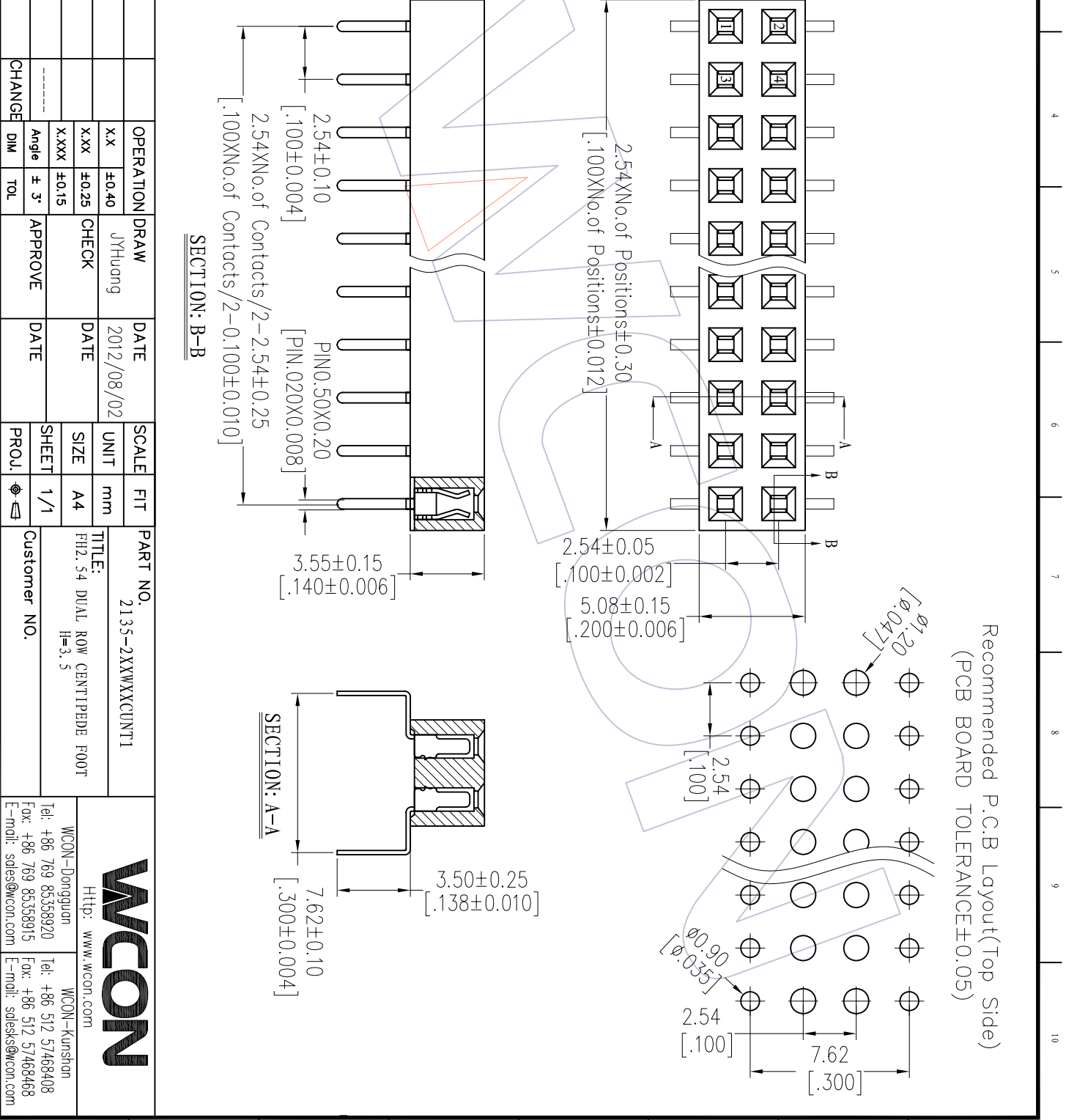
2135 - 2 XX W XX C U N T 1

No. of Pins per Row: 02-40PIN  
 Contact Plating:  
 G0=Gold Flash  
 G3=10μ"Gold  
 G4=15μ"Gold  
 G5=30μ"Gold  
 S0=Gold Flash/Tin  
 S3=10μ"Gold/Tin  
 S4=15μ"Gold/Tin  
 S5=30μ"Gold/Tin  
 SN=Tin  
 SM=Matte Tin

Packing:  
 T=Tube

Item	Pitch	Mating
Standard	2.54	1115/1120/1125
Alternate		

REV	DATE	MODIFICATION DESCRIPTION
A0	2012/08/02	NEW



Recommended P.C.B. Layout (Top Side)  
 (PCB BOARD TOLERANCE ±0.05)

OPERATION	DRAW	DATE	SCALE	FIT	PART NO.
XX	JYHuang	2012/08/02	mm		2135-2XXWXXCNT1
XX	CHECK	DATE	UNIT		TITLE:
X.XXX			A4		PH2.54 DUAL ROW CENTRIPEDB FOOT
Angle	APPROVE	DATE	SHEET		Customer NO.
± 3°			1/1		
DIM	TOL		PROJ.		

# WCON

WCON-Dongguan  
 Tel: +86 769 85358920  
 Fax: +86 769 85358915  
 E-mail: sales@wcon.com

WCON-Kunshan  
 Tel: +86 512 57468408  
 Fax: +86 512 57468468  
 E-mail: sales@wcon.com