

HSPF

TECHNICAL SPECS:

Current Rating: 3.0AMP
 Contact Resistance: 10mΩ Max
 Dielectric Strength: Min 1000Vrms
 Mechanical Life: Min 500 cycles
 Mating Pin: $\phi 0.40$ to $\phi 0.66$ mm or 0.50SQ
 Forces: (polished steel gauge $\phi 0.47$ mm)
 Insertion: 200g Max/Pin, Withdrawal: 60g/Pin
 Operation Temperature: -40°C to +105°C

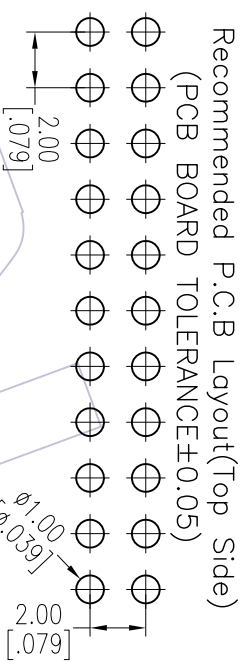
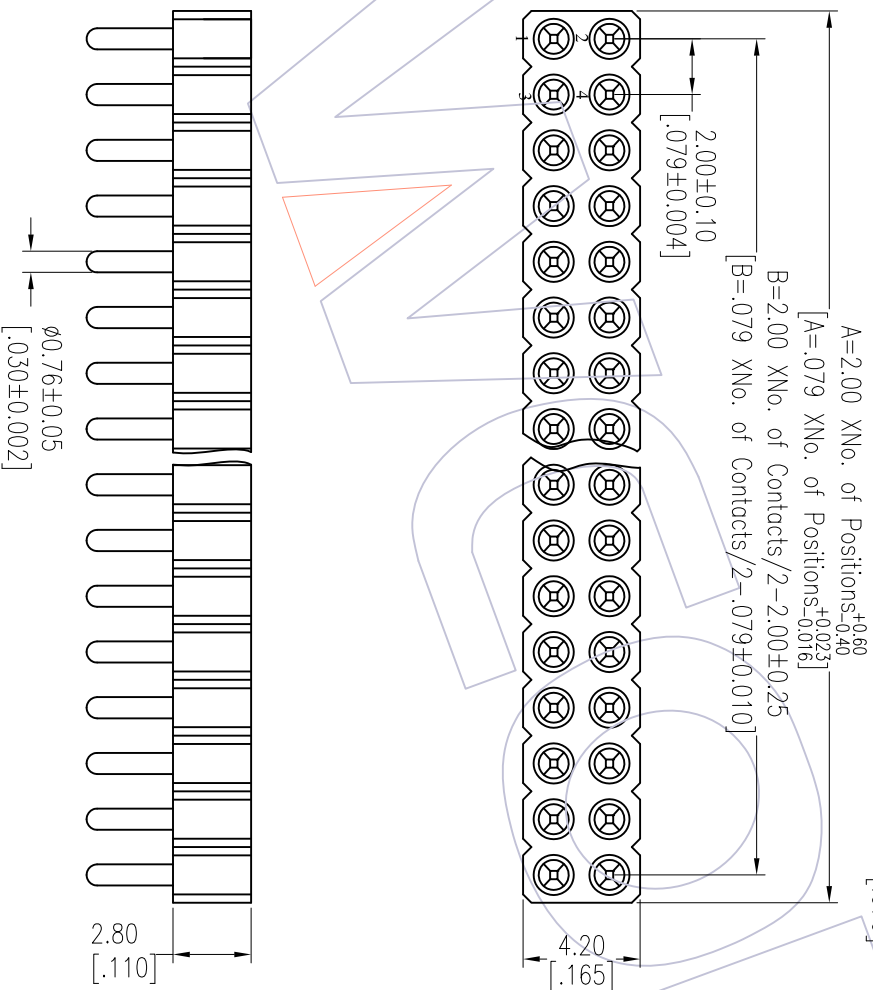
Sleeve: Brass CuZn36Pb3 (C36000), Sn over Ni
 Contact Clip (4 finger): BeCu (C17200), Au or Sn over Ni
 Insulator Material: PPS+30%G.F (UL94V-0)

Ordering Information

3522-282 XX S XX 059 X 1

No. of Pin: 2-40PIN
 Contact Plating: SO=Gold Flash/Tin
 Packing: A=Tray, T=Tube
 S3=10u"Gold/Tin
 S4=15u"Gold/Tin
 S5=30u"Gold/Tin
 SN=Tin

Item	Pitch	Mating
Standard	2.00	3512
Alternate		



NO. of PIN	DIM A
40PIN	2.0*NO. of Positions+1.00±0.40
<40PIN	2.0*NO. of Positions+0.60

OPERATION	DRAW	DATE	SCALE	FIT	PART NO.
XX	Wang	2013/05/17	UNIT	mm	3522-282XXSX059X1
CHECK	CHECK	DATE	SIZE	A4	TITLE:
XXX	XXX		±0.15		2.00mm MACHINED FEMALE HEADER
ANGLE	APPROVE	DATE	SHEET	1/1	DUAL ROW 180° H=2.80 L=5.9
DM	TOL		PROJ.		Customer NO.

WCON

Http: www.wcon.com
 WCON-Dongguan
 Tel: +86 769 85358920
 Fax: +86 769 85358915
 E-mail: sales@wcon.com
 WCON-Kunshan
 Tel: +86 512 57468408
 Fax: +86 512 57468468
 E-mail: sales@wcon.com