

# HSF

## TECHNICAL SPECS:

Current Rating: 3.0AMP  
 Contact Resistance: 10m Ω Max  
 Dielectric Strength: Min 1000Vrms  
 Mechanical Life: Min 500 cycles  
 Mating Pin:  $\phi 0.40$  to  $\phi 0.56$ mm  
 Forces: (polished steel gauge  $\phi 0.47$ mm)  
 Insertion: 200g Max/Pin, Withdrawal: 60g Min/Pin  
 Operation Temperature:  $-40^{\circ}\text{C}$  to  $+105^{\circ}\text{C}$

Sleeve: Brass CuZn36Pb3(C36000)  
 Contact Clip(4 finger): BeCu(C17200)  
 Insulator Material: PPS+30%G.F(U94V-0)

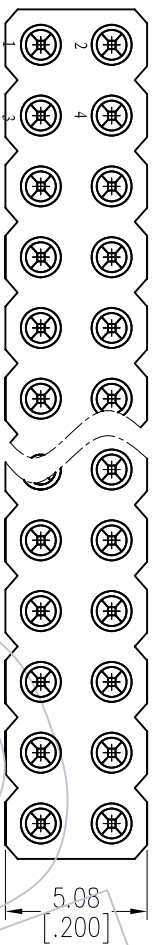
## Ordering Information

3520-192 XX S XX 048 X 1

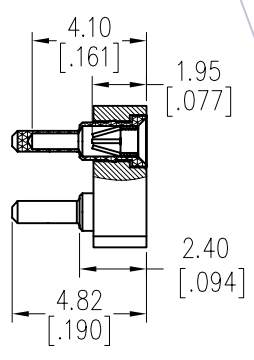
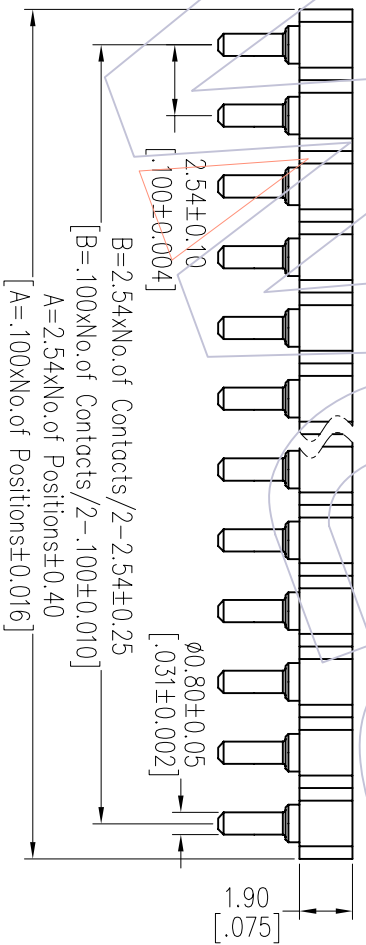
No. of Pin: 2~50PIN  
 Contact Plating:  
 S0=Gold Flash/Tin  
 S3=10u"Gold/Tin  
 S4=15u"Gold/Tin  
 S5=30u"Gold/Tin  
 SN=Tim

Packing:  
 A=Tray  
 T=Tube

Item	Pitch	Mating
Standard	2.54	3510
Alternate		



Recommended P.C.B Layout(Top Side)  
 (PCB BOARD TOLERANCE $\pm 0.05$ )



OPERATION		DRAW		DATE		SCALE		FIT		PART NO.	
XX	$\pm 0.40$	JYHuang		2012/10/17		mm				3520-192XXSXX048X1	
X.XX		CHECK		DATE		UNIT		SIZE		TITLE:	
X.XXX		$\pm 0.15$		X.XXX		$\pm 3^{\circ}$		A4		2-54mm MACHINED FEMALE HEADER	
Angle		APPROVE		DATE		SHEET		1/1		DUAL ROW 180° H=1.90 L=4.82	
DIM		TOL		PROJ.		Customer NO.					
CHANGE		DATE		DATE		DATE		DATE		DATE	
MODIFICATION DESCRIPTION		NEW									
REV		DATE		DATE		DATE		DATE		DATE	
A0		2012/10/17									

# WCON

Http: www.wcon.com

WCON-Dongguan  
 Tel: +86 769 85358920  
 Fax: +86 769 85358915  
 E-mail: sales@wcon.com

WCON-Kunshan  
 Tel: +86 512 57468408  
 Fax: +86 512 57468468  
 E-mail: sales@wcon.com