

# HSF

## TECHNICAL SPECS:

Current Rating: 3.0AMP  
 Contact Resistance: 10m Ω Max  
 Dielectric Strength: Min 1000Vrms  
 Mechanical Life: Min 500 cycles  
 Mating Pin:  $\varnothing 0.40$  to  $\varnothing 0.56$ mm  
 Forces: (polished steel gauge  $\varnothing 0.47$ mm)  
 Insertion: 200g Max/Pin, Withdrawal: 60g Min/Pin  
 Operation Temperature:  $-40^{\circ}\text{C}$  to  $+105^{\circ}\text{C}$

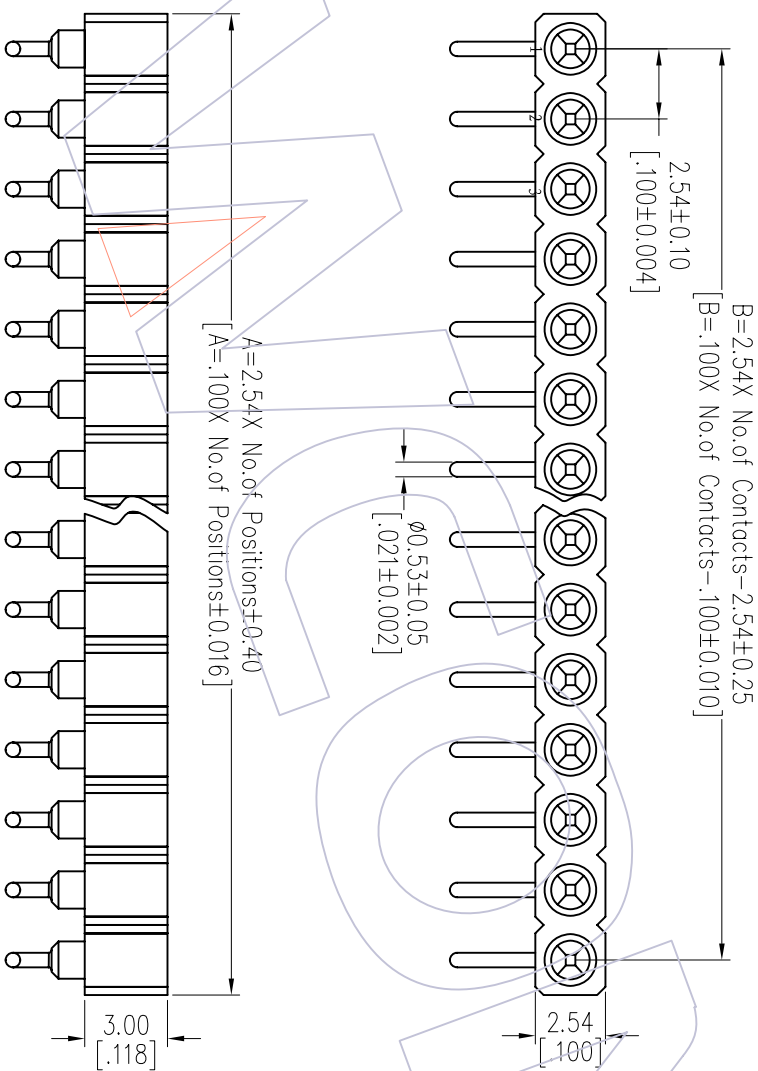
Sleeve: Brass CuZn36Pb3(C36000)  
 Contact Clip (4 finger): BeCu(C17200)  
 Insulator Material: PPS+30%G.F(UL94V-0)

## Ordering Information

3520-301 XX R XX 097 X 1

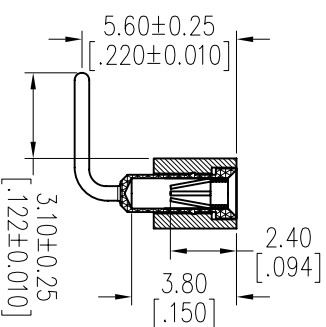
No. of Pin: 2-50PIN  
 Contact Plating: S0=Gold Flash/Tin  
 S3=10u"Gold/Tin  
 S4=15u"Gold/Tin  
 S5=30u"Gold/Tin  
 SN=Tin  
 Packing: A=Tray  
 T=Tube

Item	Pitch	Mating
Standard	2.54	3510
Alternate		



Recommended P.C.B Layout(Top Side)  
 (PCB BOARD TOLERANCE±0.05)

Dimensions shown in the diagram:  
 Pad Pitch:  $2.54$  mm  
 Pad Diameter:  $0.80$  mm  
 Pad Spacing:  $[.100]$  mm



REV	DATE	MODIFICATION DESCRIPTION	CHANGE	OPERATION	DRAW	DATE	SCALE	FIT	PART NO.	TITLE:	WCON-Dongguan	WCON-Kunshan
A0	2012/10/18	NEW	---	XX	JYHuang	2012/10/18	mm	A4	3520-301XXXXX097X1	2.54mm MACHINED FEMALE HEADER SINGLE ROW 90° H=3.00 L=9.7	Tel: +86 769 85358920	Tel: +86 512 57468408
REV	DATE	MODIFICATION DESCRIPTION	CHANGE	Angle	APPROVE	DATE	SHEET	PROJ.	Customer NO.		Fax: +86 769 85358915	Fax: +86 512 57468468
				± 3'			1/1				E-mail: sales@wcon.com	E-mail: sales@wcon.com

# WCON

Http: www.wcon.com

WCON-Dongguan  
 Tel: +86 769 85358920  
 Fax: +86 769 85358915  
 E-mail: sales@wcon.com

WCON-Kunshan  
 Tel: +86 512 57468408  
 Fax: +86 512 57468468  
 E-mail: sales@wcon.com