

HSF

TECHNICAL SPECS:

Current Rating: 3.0AMP
 Contact Resistance: 10m Ω Max
 Dielectric Strength: Min 1000Vrms
 Mechanical Life: Min 500 cycles
 Mating Pin: $\varnothing 0.40$ to $\varnothing 0.56$ mm
 Forces: (polished steel gauge $\varnothing 0.47$ mm)
 Insertion: 200g Max/Pin, Withdrawal: 60g Min/Pin
 Operation Temperature: -40°C to $+105^{\circ}\text{C}$

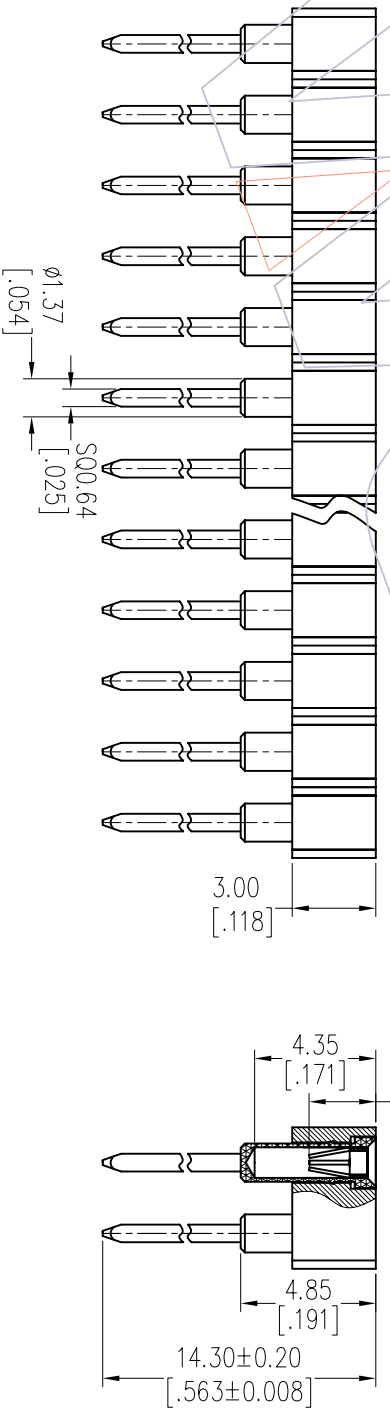
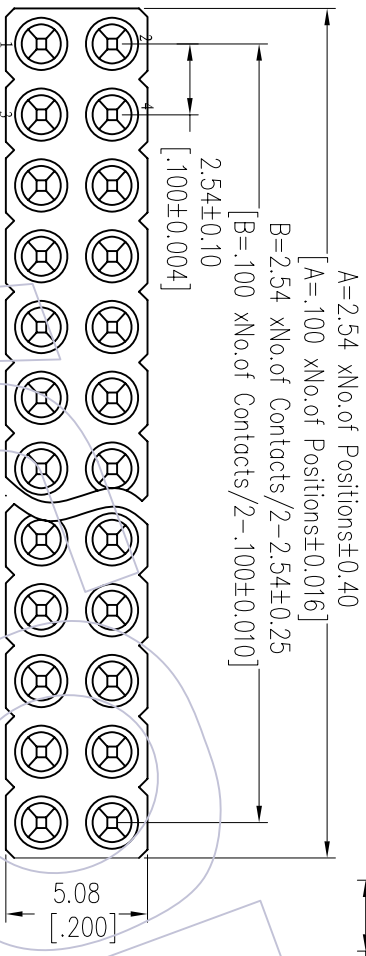
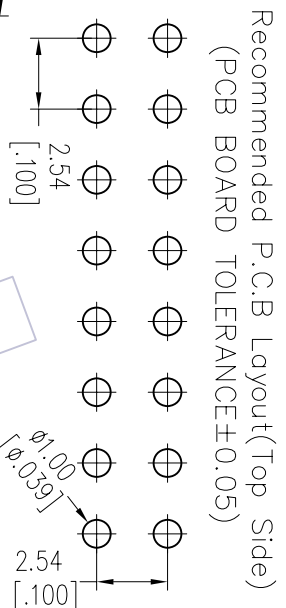
Sleeve: Brass CuZn36Pb3(C36000), Sn over Ni
 Contact Clip(4 finger): BeCu(C17200), Au or Sn over Ni
 Insulator Material: PPS+30%G.F(UL94V-0)

Ordering Information

3520-302 XX S XX 143 X 1

No. of Pin: 2-50PIN
 Contact Plating: S0=Gold Flash/Tin, S3=10u"Gold/Tin, S4=15u"Gold/Tin, S5=30u"Gold/Tin, SN=Tin
 Packing: A=Tray, T=Tube

Item	Pitch	Mating
Standard	2.54	3510
Alternate		



OPERATION	DRAW	DATE	SCALE	FIT	PART NO.	WCON Http: www.wcon.com WCON-Dongguan Tel: +86 769 85358920 Fax: +86 769 85358915 E-mail: sales@wcon.com WCON-Kunshan Tel: +86 512 57468408 Fax: +86 512 57468468 E-mail: sales@wcon.com
XX	JYHuang	2012/10/18	UNIT	mm	3520-302XXSXX143X1	
X.XX	CHECK	DATE	SIZE	A4	TITLE:	
X.XXX	±0.15	DATE	SHEET	1/1	2.54mm MACHINED FEMALE HEADER	
Angle	± 3'	DATE	PROJ.		DUAL ROW 180° H=3.00 L=14.3 SQUARE PIN	
DIW	TOL	DATE			Customer NO.	
CHANGE						
MODIFICATION DESCRIPTION						
REV	DATE					
A0	2012/10/18	NEW				