

HSF

TECHNICAL SPECS:

Current Rating: 3.0AMP
 Contact Resistance: 10m Ω Max
 Dielectric Strength: Min 1000VRMS
 Mechanical Life: Min 500 cycles
 Mating Pin: $\phi 0.7$ to $\phi 0.9$ mm or 0.6355SQ
 Forces: (polished steel gauge $\phi 0.76$ mm)
 Insertion: 150g Max/Pin, Withdrawal: 30g Min/Pin
 Operation Temperature: -40°C to $+105^{\circ}\text{C}$

Sleeve: Brass CuZn36Pb3(C36000)
 Contact Clip(6 finger): BeCu(C17200)
 Insulator Material: PPS+30%G.F(UL94V-0)

Ordering Information

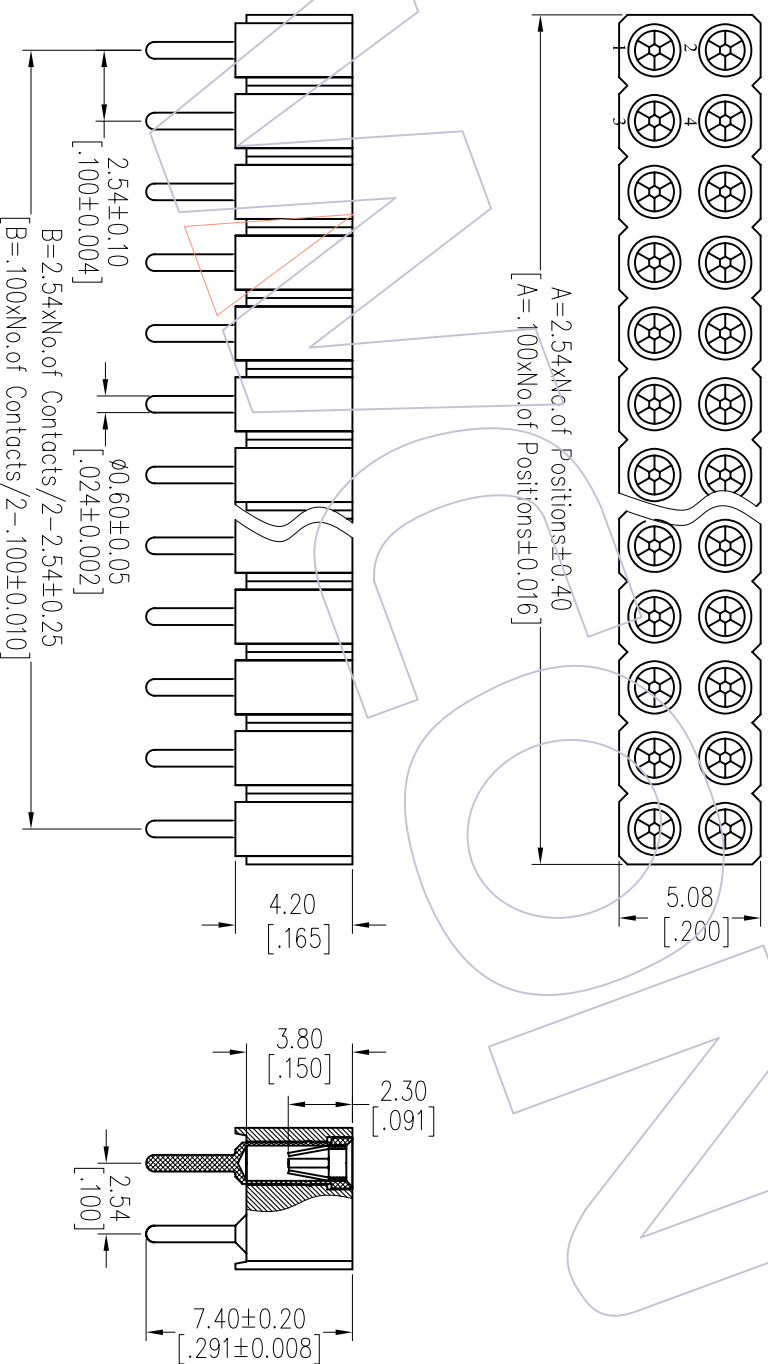
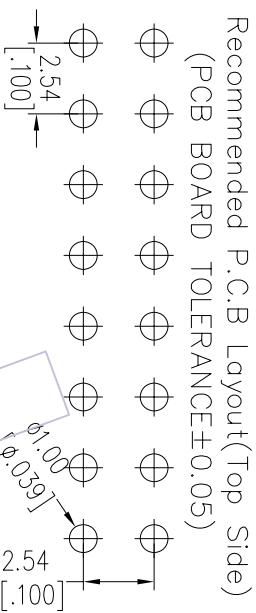
3521-422 XX S XX 074 X 1

No. of Pin
2-50PIN

Contact Plating
S0=Gold Flash/Tin
S3=10u"Gold/Tin
S4=1.5u"Gold/Tin
S5=30u"Gold/Tin
SN=Tin

Packing
A=Tray
T=Tube

Item	Pitch	Mating
Standard	2.54	3511
Alternate		



REV	DATE	MODIFICATION DESCRIPTION	CHANGE	DIV	TOL	APPROVE	DATE	SCALE	FIT	PART NO.	WCON Http: www.wcon.com WCON-Dongguan Tel: +86 769 85358920 Fax: +86 769 85358915 E-mail: sales@wcon.com WCON-Kunshan Tel: +86 512 57468408 Fax: +86 512 57468468 E-mail: sales@wcon.com
A0	2012/10/18	NEW						A4	1/1	3521-422XXSX074X1	
OPERATION			DRAW	DATE	SCALE	DATE	UNIT	PART NO.			
XX			JYHuang	2012/10/18	mm			3521-422XXSX074X1			
CHECK			CHECK	DATE	SIZE	TITLE:					
X.XXX					A4	2.54mm MACHINED FEMALE HEADER					
Angle					SHEET	DUAL ROW 180° H=4.20 L=7.4					
± 3°					1/1	Customer NO.					
PROJ.											