

HSF

TECHNICAL SPECS:

- Current Rating: 3.0AMP
- Contact Resistance: 10m Ω Max
- Dielectric Strength: Min 1000V/RMS
- Mechanical Life: Min 500 cycles
- Mating Pin: $\phi 0.7$ to $\phi 0.9$ mm or 0.6355SQ
- Forces: (polished steel gauge $\phi 0.76$ mm)
- Insertion: 150g Max/Pin, Withdrawal: 30g Min/Pin
- Operation Temperature: -40°C to +105°C
- Sleeve: Brass CuZn36Pb3(C36000)
- Contact Clip(6 finger): BeCu(C17200)
- Insulator Material: PPS+30%G.F(UL94V-0)

Ordering Information

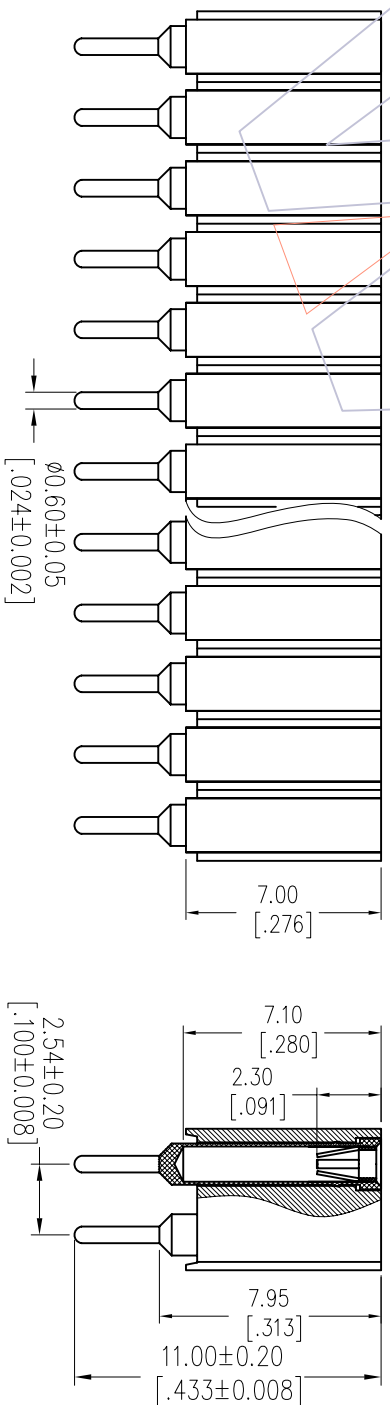
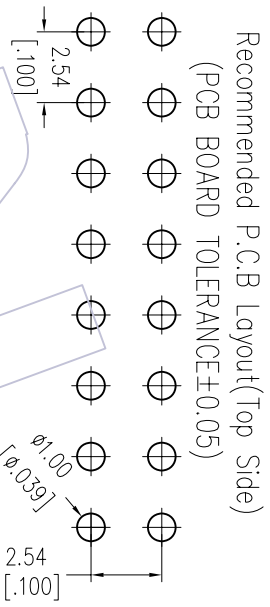
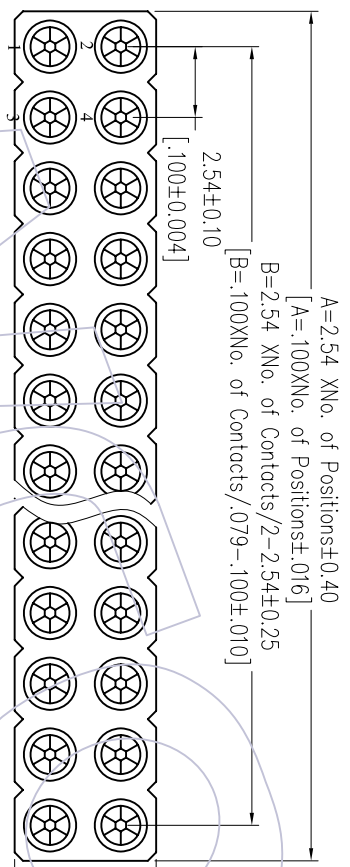
3521-702 XX S XX 110 X 1

No. of Pin
2-50PIN

Contact Plating
S0=Gold Flash/Tin
S3=10u"Gold/Tin
S4=15u"Gold/Tin
S5=30u"Gold/Tin
SN=Tin

Packing
A=Tray
T=Tube

Item	Pitch	Mating
Standard	2.54	3511
Alternate		



OPERATION	DRAW	DATE	SCALE	FIT	PART NO.
XX	JYHuong	2012/10/18	mm		3521-702XXSXX110X1
XX	CHECK	DATE	UNIT		
X.XXX	±0.25		A4		TITLE: 2.54mm MACHINED FEMALE HEADER
X.XXX	±0.15		SHEET	1/1	DUAL ROW 180° H=7.00 L=11.0
Angle	± 3°	DATE	PROU.		Customer NO.
DIM	TOL				
CHANGE					
REV	DATE	MODIFICATION DESCRIPTION			
A0	2012/10/18	NEW			

WCON

Http: www.wcon.com

WCON-Dongguan Tel: +86 769 85358920 Fax: +86 769 85358915 E-mail: sales@wcon.com

WCON-Kunshan Tel: +86 512 57468408 Fax: +86 512 57468468 E-mail: sales@wcon.com