

# HSF

## TECHNICAL SPECS:

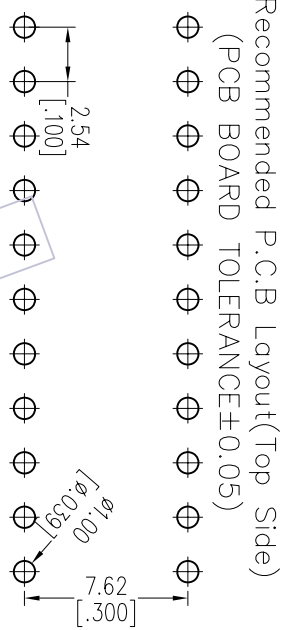
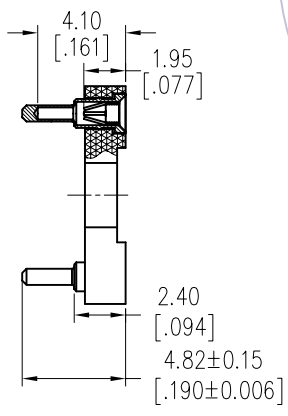
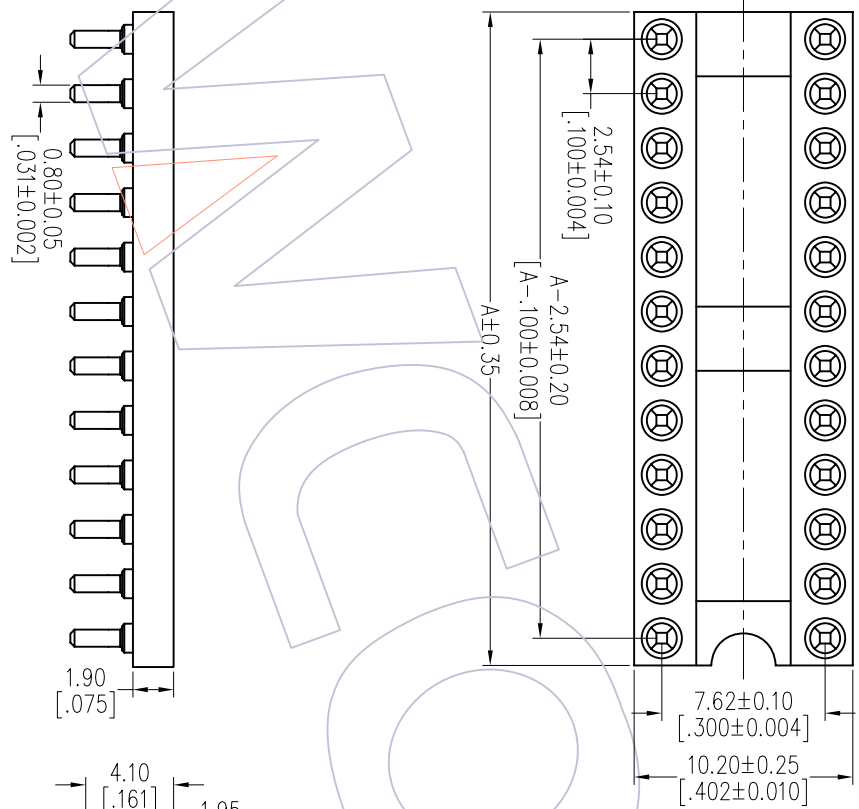
Current Rating: 1.0AMP  
 Contact Resistance: 10m Ω Max  
 Dielectric Strength: Min 1000Vrms  
 Mechanical Life: Min 100 cycles  
 Mating Pin: φ0.40 to φ0.56mm  
 Forces: (polished steel gauge φ0.43mm)  
 Insertion: 200g Max/Pin, Withdrawal: 60g Min/Pin  
 Operation Temperature: -40°C to +105°C

Sleeve: Brass CuZn36Pb3(C36000), Sn over Ni  
 Contact Clip(4 finger): BeCu(C17200), Au or Sn over Ni  
 Insulator Material: PPS+30%G.F.(UL94V-0)  
 06P~18P Insulators without center bar  
 20P~28P Insulators with center one bar

## Ordering Information

7110-191 XX S XX 048 X 1

Row of Pitch    No. of Pin    Contact Plating    Packing  
 l=7.62mm    See tab    S0=Gold Flash/Tin    T=Tube  
 S3=10u"Gold/Tin    S4=15u"Gold/Tin    S5=30u"Gold/Tin    SN=Tin



Recommended P.C.B Layout(Top Side)  
 (PCB BOARD TOLERANCE±0.05)

## Dimensional & Ordering Information

NO. of Poles	Part No.	Dim A
06	7110-19106SXX048X1	7.62
08	7110-19108SXX048X1	10.16
10	7110-19110SXX048X1	12.70
14	7110-19114SXX048X1	17.78
16	7110-19116SXX048X1	20.32
18	7110-19118SXX048X1	22.86
20	7110-19120SXX048X1	25.40
22	7110-19122SXX048X1	27.94
24	7110-19124SXX048X1	30.48
28	7110-19128SXX048X1	35.56

# WCON

Http: www.wcon.com

WCON-Dongguan Tel: +86 769 85358920 Fax: +86 769 85358915 E-mail: sales@wcon.com  
 WCON-Kunshan Tel: +86 512 57468408 Fax: +86 512 57468468 E-mail: sales@wcon.com

REV	DATE	MODIFICATION DESCRIPTION	CHANGE DIM
A0	2012/11/02	NEW	-----

OPERATION	DRAW	DATE	SCALE	FIT
XX ±0.40	JYHuogng	2012/11/02	UNIT mm	
XX ±0.25	CHECK	DATE	SIZE A4	
XXXX ±0.15	APPROVE	DATE	SHEET 1/1	
Angle ± 3'	TOL		PROJ.	

PART NO.	TITLE:
7110-191XXSXX048X1	IC SOCKET 180° H=1.9 L=4.82
Customer NO.	Row of Pitch 7.62