

HSF

TECHNICAL SPECS:

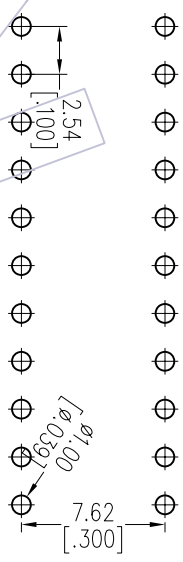
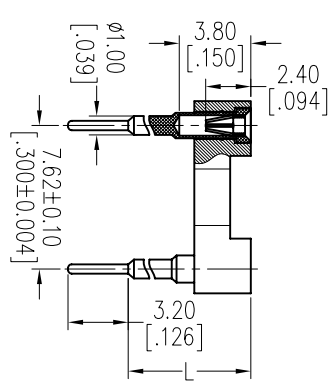
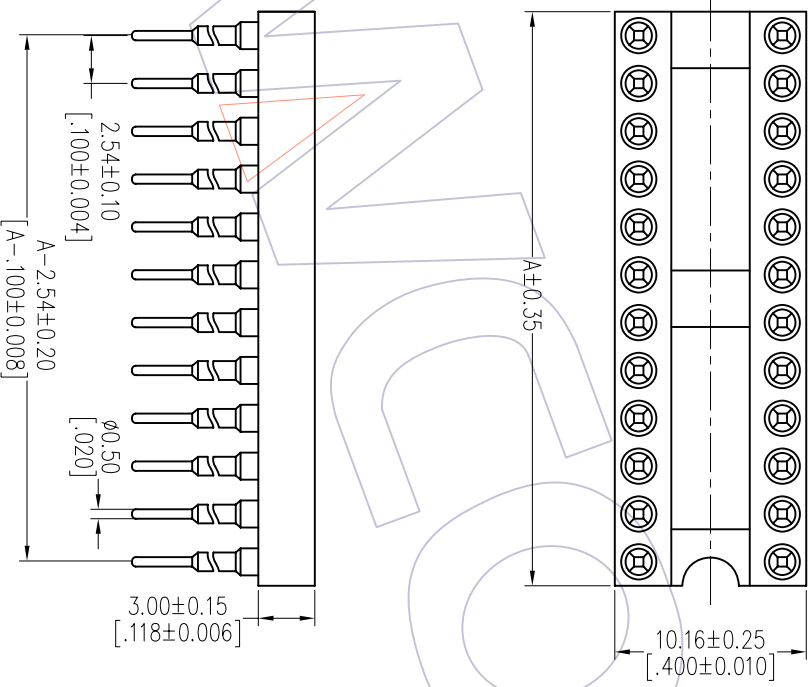
Current Rating: 1.0AMP
 Contact Resistance: 10m Ω Max
 Dielectric Strength: Min 1000Vrms
 Mechanical Life: Min 100 cycles
 Mating Pin: Ø0.40 to Ø0.56mm
 Forces: (polished steel gauge Ø0.45mm)
 Insertion: 200g Max/Pin, Withdrawal: 60g Min/Pin
 Operation Temperature: -40°C to +105°C

Sleeve: Brass CuZn36Pb3(C363000), Sn over Ni
 Contact Clip(4 finger): BeCu(C17200), Au or Sn over Ni
 Insulator Material: PPS+30%G.F(Ul94V-0)
 06P~18P Insulators without center bar
 20P~28P Insulators with center one bar

Ordering Information

7110-301 XX S XX XXX X 1

Row of Pitch No. of Pin Contact Plating Pin Long Packing
 1=7.62mm See tab S0=Gold Flash/Tin 092=9.2mm T=Tube
 S3=10u'Gold/Tin 102=10.2mm A=Tray
 S4=15u'Gold/Tin 112=11.2mm
 S5=30u'Gold/Tin 122=12.2mm
 SN=Fin 132=13.2mm
 142=14.2mm
 152=15.2mm
 162=16.2mm
 182=18.2mm
 212=21.2mm
 252=25.2mm
 362=36.2mm



Recommended P.C.B Layout(Top Side)
 (PCB BOARD TOLERANCE±0.05)

Dimensional & Ordering Information

NO. of Poles	Part No.	Dim A
06	7110-30106SXXXXX1	7.62
08	7110-30108SXXXXX1	10.16
10	7110-30110SXXXXX1	12.70
12	7110-30112SXXXXX1	15.24
14	7110-30114SXXXXX1	17.78
16	7110-30116SXXXXX1	20.32
18	7110-30118SXXXXX1	22.86
20	7110-30120SXXXXX1	25.40
22	7110-30122SXXXXX1	27.94
24	7110-30124SXXXXX1	30.48
28	7110-30128SXXXXX1	35.56

Pin Long Code XXX	Pin Long Dim "A"	Pin Long Code XXX	Pin Long Dim "A"
092	6.0	152	12.0
102	7.0	162	13.0
112	8.0	182	15.0
122	9.0	212	18.0
132	10.0	252	22.0
142	11.0	362	33.0

WCON

Http: www.wcon.com

WCON-Dongguan Tel: +86 769 85358920 Fax: +86 769 85358915 E-mail: sales@wcon.com
 WCON-Kunshan Tel: +86 512 57468408 Fax: +86 512 57468468 E-mail: sales@wcon.com

OPERATION	DRAW	DATE	SCALE	FIT	PART NO.
XX ±0.40	JYHuogng	2012/11/02	mm		SEE TABLE
XX ±0.25	CHECK	DATE	A4		TITLE: 2.54mm IC SOCKET 180° H=3.0 Row of Pitch 7.62
XXXX ±0.15			1/1		Customer NO.
Angle ± 3'	APPROVE	DATE	PROJ.		
DIW TOL					

REV	DATE	MODIFICATION DESCRIPTION	CHANGE
A0	2012/11/02	NEW	