

HSF

TECHNICAL SPECS:

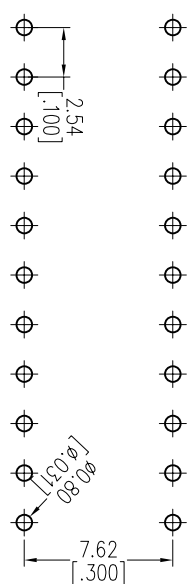
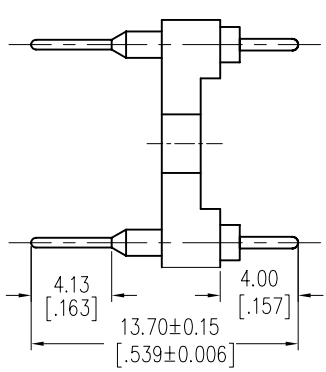
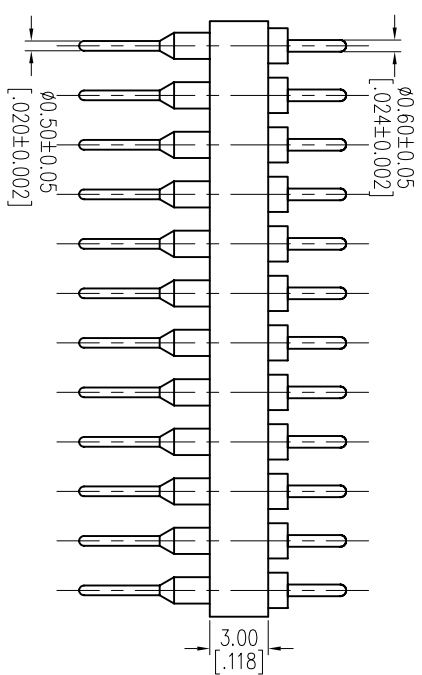
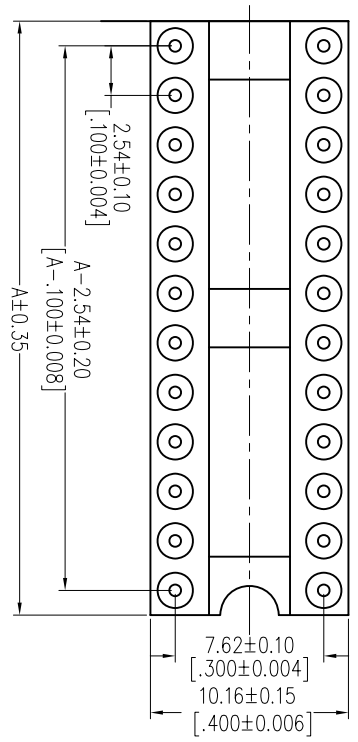
Current Rating: 1.0AMP
 Contact Resistance: 10m Ω Max
 Dielectric Strength: Min 1000Vrms
 Mechanical Life: Min 100 cycles
 Connecting Pin: Ø0.60mm
 Operation Temperature: -40°C to +105°C

Contact Material: Brass CuZn36Pb3(C36000)
 Contact plating: Au over Ni
 Insulator Material: PPS+30%G.F(U194V-0)
 06P~18P Insulators without center bar
 20P~28P Insulators with center one bar

Ordering Information

3560-301 XX S XX 137 X 1

Row of Pitch No. of Pin Contact Plating Packing
 I=7.62mm See tab G0=Gold Flash T=Tube
 G3=10u"Gold G4=5u"Gold A=Tray
 G5=30u"Gold



Recommended P.C.B. Layout(Top Side)
 (PCB BOARD TOLERANCE±0.05)

Dimensional & Ordering Information

Poles	Part No.	Dim A
06	3560-30106SXX137X1	7.62
08	3560-30108SXX137X1	10.16
10	3560-30110SXX137X1	12.70
12	3560-30112SXX137X1	15.24
14	3560-30114SXX137X1	17.78
16	3560-30116SXX137X1	20.32
18	3560-30118SXX137X1	22.86
20	3560-30120SXX137X1	25.40
22	3560-30122SXX137X1	27.94
24	3560-30124SXX137X1	30.48
28	3560-30128SXX137X1	35.56

WCON

Http: www.wcon.com

WCON-Dongguan Tel: +86 769 85358920 Fax: +86 769 85358915 E-mail: sales@wcon.com
 WCON-Kunshan Tel: +86 512 57468408 Fax: +86 512 57468468 E-mail: sales@wcon.com

REV	DATE	MODIFICATION DESCRIPTION	CHANGE DIM
A0	2012/11/05	NEW	-----

OPERATION	DRAW	DATE	SCALE	FIT
XX ±0.40	JYHuog	2012/11/05	UNIT mm	
X.XX ±0.25	CHECK	DATE	SIZE A4	
X.XXX ±0.15	APPROVE	DATE	SHEET 1/1	
Angle ± 3'	PROJ.			

PART NO. SEE TAB
 TITLE: 2.54mm MACHINED ADAPTER CONNECTOR
 180° H=3.0 I=13.7 Row of Pitch 7.62
 Customer NO.

1 2 3 4 5 6 7 8 9 10