

# HSF

### TECHNICAL SPECS:

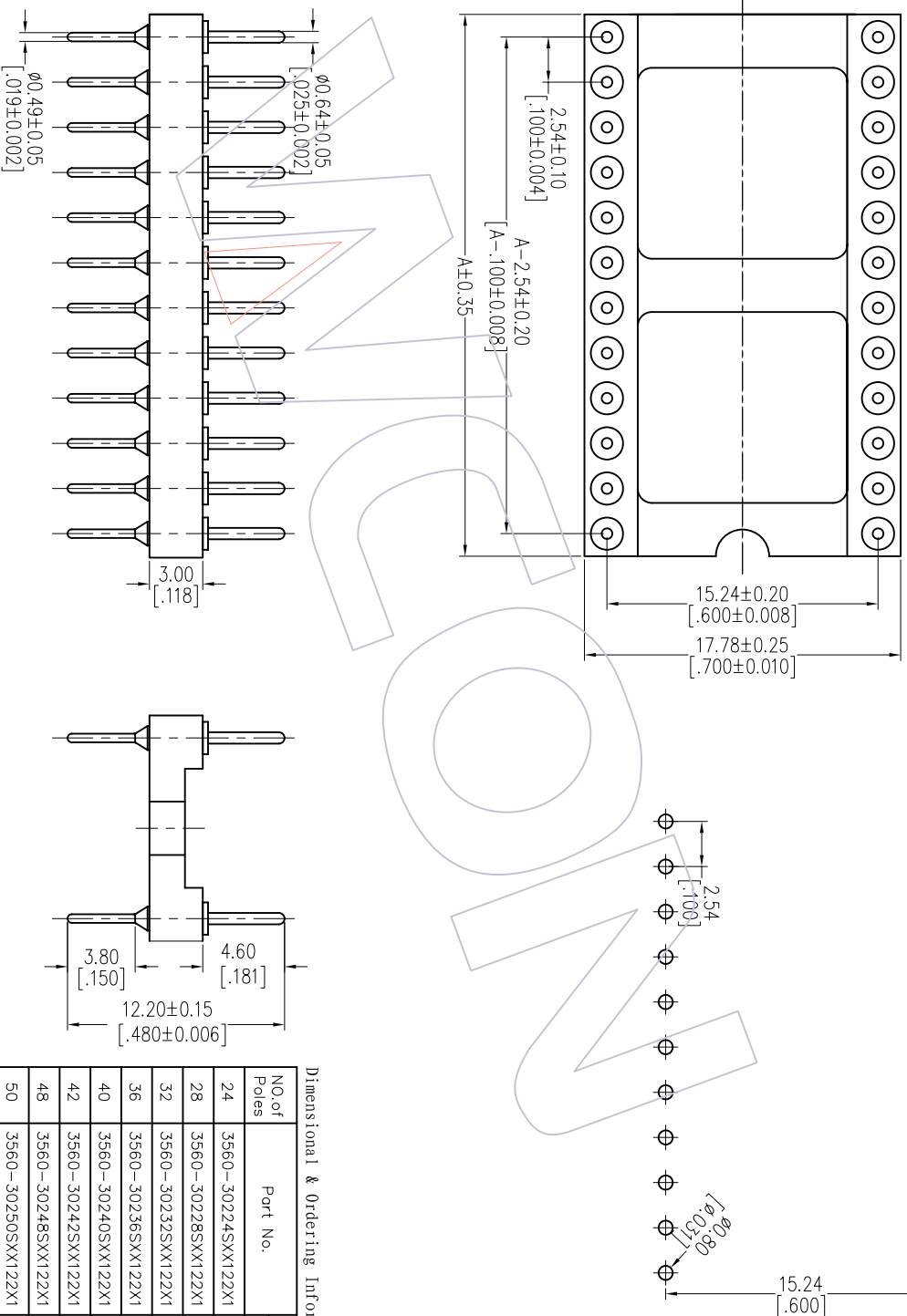
Current Rating: 1.0AMP  
 Contact Resistance: 10m Ω Max  
 Dielectric Strength: Min 1000Vrms  
 Mechanical Life: Min 100 cycles  
 Connecting Pin: Ø0.64mm  
 Operation Temperature: -40°C to +105°C

Contact: Brass CuZn36Pb3(C36000)  
 Contact plating: Au over Ni  
 Insulator Material: PPS+30%G.F(U.L94V-0)  
 24P~32P Insulators with center one bar  
 36P~48P Insulators with center two bar

## Ordering Information

3560-302 XX S XX 122 X 1

Row of Pitch No. of Pin Contact Plating Packing  
 2=15.24mm See tab G0=Gold Flash T=Tube  
 G3=10u"Gold G4=15u"Gold A=Tray  
 G5=30u"Gold



Recommended P.C.B Layout(Top Side)  
 (PCB BOARD TOLERANCE±0.05)

### Dimensional & Ordering Information

NO. of Poles	Part No.	Dim A
24	3560-30224SXX122X1	30.48
28	3560-30228SXX122X1	35.56
32	3560-30232SXX122X1	40.64
36	3560-30236SXX122X1	45.72
40	3560-30240SXX122X1	50.80
42	3560-30242SXX122X1	53.34
48	3560-30248SXX122X1	60.96
50	3560-30250SXX122X1	63.50
52	3560-30252SXX122X1	66.04

# WCON

Http: www.wcon.com

WCON-Dongguan Tel: +86 769 85358920 Fax: +86 769 85358915 E-mail: sales@wcon.com

WCON-Kunshan Tel: +86 512 57468408 Fax: +86 512 57468468 E-mail: sales@wcon.com

OPERATION	DRAW	DATE	SCALE	FIT	PART NO.
XX	JYHuong	2012/11/05	UNIT	mm	SBE TAB
XX	CHECK	DATE	SIZE	A4	TITLE: 2.54mm MACHINED ADAPTER CONNECTOR 180° H=3.0 L=12.2 Row of Pitch 15.24
X XXX	± 0.15	DATE	SHEET	1/1	Customer NO.
Angle	± 3°	DATE	PROJ.		
DIM	TOL	DATE			

REV	DATE	MODIFICATION DESCRIPTION	CHANGE
A0	2012/11/05	NEW	