

HSF

TECHNICAL SPECS:

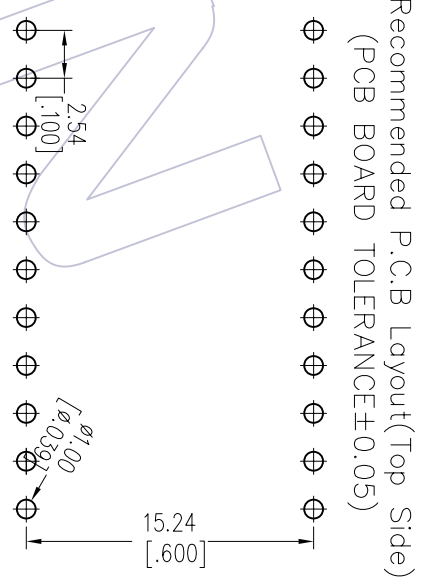
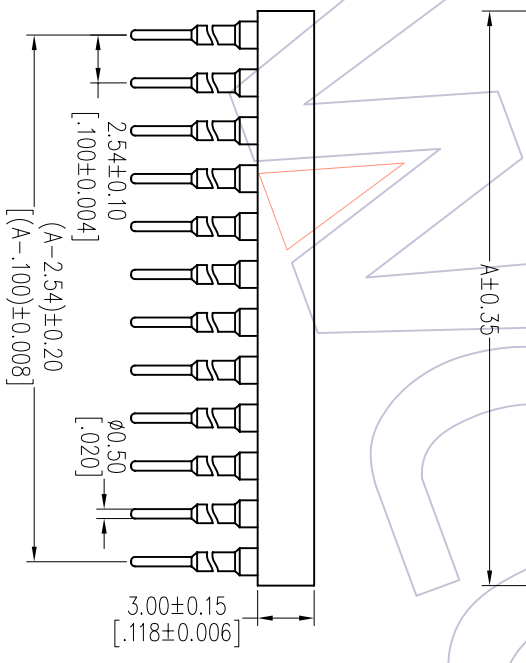
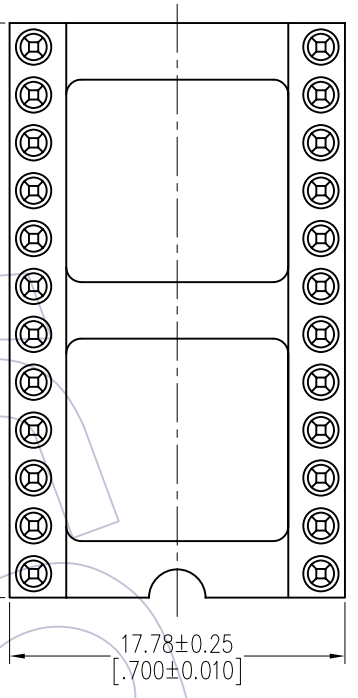
Current Rating: 1.0AMP
 Contact Resistance: 10m Ω Max
 Dielectric Strength: Min 1000Vrms
 Mechanical Life: Min 100 cycles
 Mating Pin: φ0.40 to φ0.56mm
 Forces: (polished steel gauge φ0.45mm)
 Insertion: 200g Max/Pin, Withdrawal: 60g Min/Pin
 Operation Temperature: -40°C to +105°C

Sleeve: Brass CuZn36Pb3(C363000), Sn over Ni
 Contact Clip(4 finger): BeCu(C17200), Au or Sn over Ni
 Insulator Material: PPS+30%G.F(Ul94V-0)
 24P~32P Insulators with center one bar
 36P~48P Insulators with center two bar

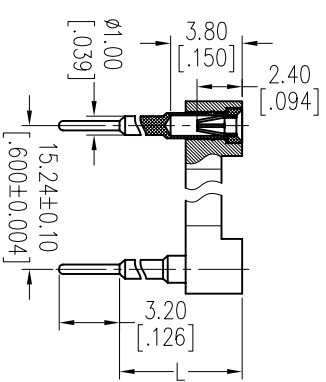
Ordering Information

7110-302 XX S XX XXX X 1

Row of Pitch	No. of Pin	Contact Plating	Pin Long	Packing
2=15.24mm	See tab	S0=Gold Flash/Tin	092=9.2mm	T=Tube
		S3=10u"Gold/Tin	102=10.2mm	A=Tray
		S4=15u"Gold/Tin	112=11.2mm	
		S5=30u"Gold/Tin	122=12.2mm	
		SN=Tin	132=13.2mm	
			142=14.2mm	
			152=15.2mm	
			162=16.2mm	
			182=18.2mm	
			212=21.2mm	
			252=25.2mm	
			362=36.2mm	



Recommended P.C.B Layout(Top Side)
 (PCB BOARD TOLERANCE±0.05)



Pin Long	Dim" L"	Pin Long	Dim" L"
092	6.0	152	12.0
102	7.0	162	13.0
112	8.0	182	15.0
122	9.0	212	18.0
132	10.0	252	22.0
142	11.0	362	33.0

Dimensional & Ordering Information			
No. of Poles	Part No.	Dim	A
24	7110-30224SXXXXXX1	30.48	
28	7110-30228SXXXXXX1	35.56	
32	7110-30232SXXXXXX1	40.64	
36	7110-30236SXXXXXX1	45.72	
40	7110-30240SXXXXXX1	50.80	
42	7110-30242SXXXXXX1	53.34	
48	7110-30248SXXXXXX1	60.96	
50	7110-30250SXXXXXX1	63.50	
52	7110-30252SXXXXXX1	66.04	

REV	DATE	MODIFICATION DESCRIPTION
A0	2012/11/02	NEW

OPERATION	DRAW	DATE	SCALE	FIT
XX ±0.40	JYHuogng	2012/11/02	UNIT mm	
XX ±0.25	CHECK	DATE	SIZE A4	
Angle ± 3°	APPROVE	DATE	SHEET 1/1	
DIW	PROJ.			

PART NO.	SBE TABLE
TITLE: 2.54mm IC SOCKET 180° H=3.0 Row of Pitch 15.24	Customer NO.

WCON

Http: www.wcon.com
 WCON-Dongguan Tel: +86 769 85358920 Fax: +86 769 85358915 E-mail: sales@wcon.com
 WCON-Kunshan Tel: +86 512 57468408 Fax: +86 512 57468468 E-mail: sales@wcon.com