



TECHNICAL SPECS:

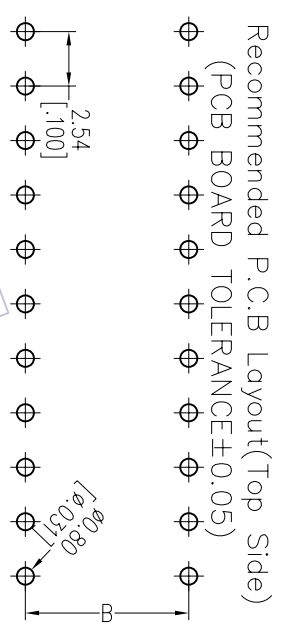
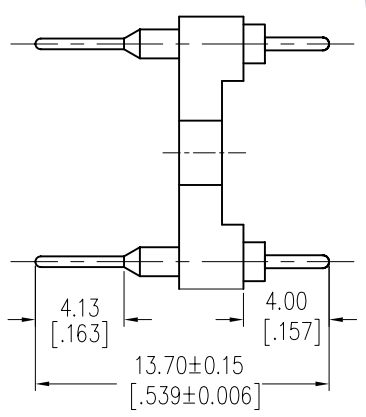
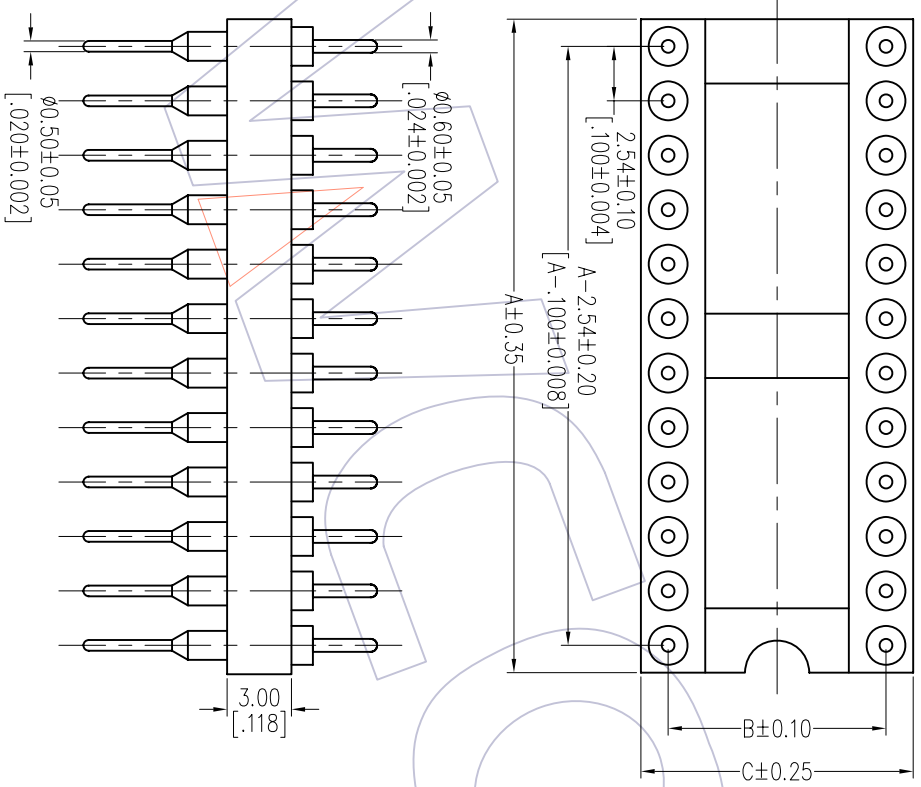
Current Rating: 1.0AMP
 Contact Resistance: 10m Ω Max
 Dielectric Strength: Min 1000Vrms
 Mechanical Life: Min 100 cycles
 Connecting Pin: Ø0.60mm
 Operation Temperature: -40°C to +105°C

Contact Material: Brass CuZn36Pb3(C36000)
 Contact plating: Au over Ni
 Insulator Material: PPS+30%G.F(UL94V-0)

Ordering Information

3560-305 XX S XX 137 X 1

Row of Pitch No. of Pin Contact Plating Packing
 S=22.86mm See tab G0=Gold Flash T=Tube
 G3=10u"Gold G4=5u"Gold A=Tray
 G5=30u"Gold



Dimensional & Ordering Information

Poles	Part No.	Dimension		
		A	B	C
50	3560-3050SXX137X1	63.50	22.86	25.40
52	3560-3052SXX137X1	66.04	22.86	25.40
64	3560-30564SXX137X1	81.28	22.86	25.40

REV	DATE	MODIFICATION DESCRIPTION	CHANGE	DIM	TOL	APPROVE	DATE	SCALE	FIT	PART NO.	SBB TAB	WCON Http: www.wcon.com WCON-Dongguan Tel: +86 769 85358920 Fax: +86 769 85358915 E-mail: sales@wcon.com WCON-Kunshan Tel: +86 512 57468408 Fax: +86 512 57468468 E-mail: sales@wcon.com
A0	2012/11/05	NEW										
OPERATION	DATE	DRAW	DATE	SCALE	FIT	TITLE:		PART NO.		SBB TAB		
XX	±0.40	JYHuong	2012/11/05	mm	A4	2.54mm MACHINED ADAPTER CONNECTOR 180° H=3.0 L=13.7 Row of Pitch 22.86						
XX	±0.25	CHECK	DATE	SIZE	A4	Customer NO.						
X.XXX	±0.15	ANGLE	± 3°	SHEET	1/1							
PROJ.												