



TECHNICAL SPECS:

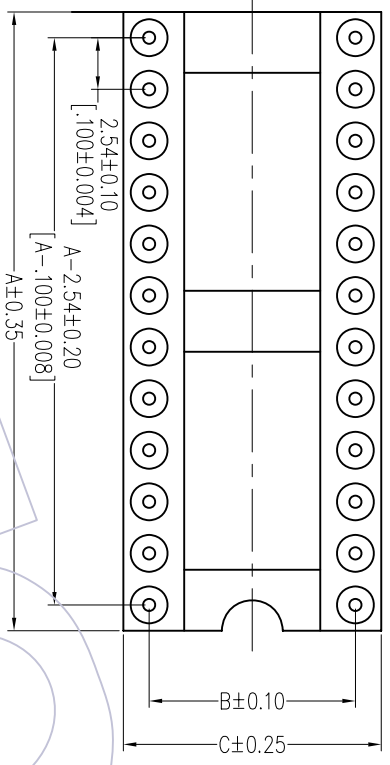
Current Rating: 1.0AMP
 Contact Resistance: 10m Ω Max
 Dielectric Strength: Min 1000V/RMS
 Mechanical Life: Min 100 cycles
 Connecting Pin: Ø0.47mm
 Operation Temperature: -40°C to +105°C

Contact Material: Brass CuZn36Pb3(C36000)
 Contact plating: Au over Ni
 Insulator Material: PPS+30%G.F.(UL94V-0)

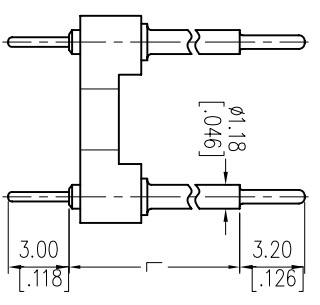
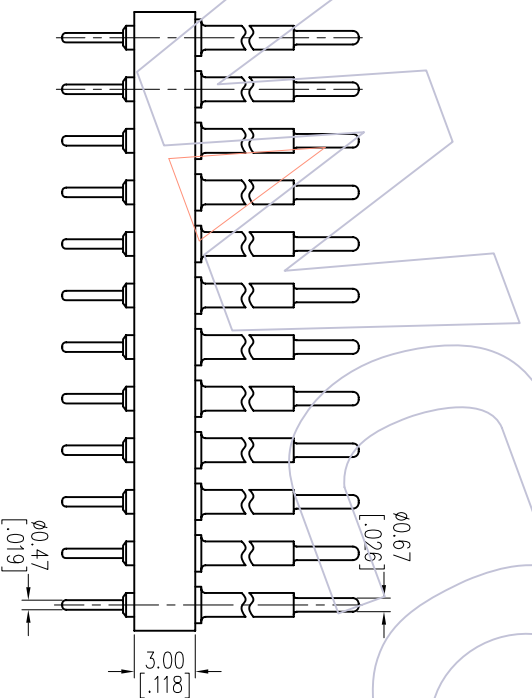
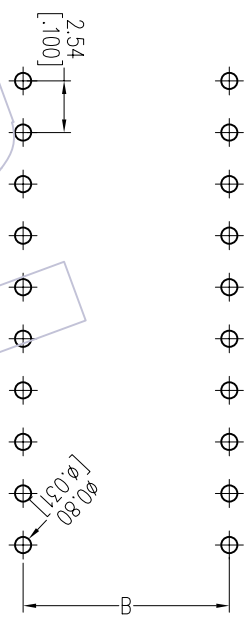
Ordering Information

3560-305 **XXSXXXXX** X1

Row of Pitch No. of Pin Contact Plating Pin Long Packaging
 5=22.86mm See tab G0=Gold Flash 124=12.4mm T=Tube
 G3=10u"Gold 146=14.6mm A=Tray
 G4=15u"Gold 215=21.5mm
 G5=30u"Gold 274=27.4mm
 336=33.6mm



Recommended P.C.B Layout(Top Side)
 (PCB BOARD TOLERANCE±0.05)



Pin Long Code:XXX	DIM"L"	Pin Long Code:XXX	DIM"L"
124	6.20	274	21.20
146	8.40	336	27.40
215	15.30		

Dimensional & Ordering Information

NO. of Poles	Part No.	Dimension		
		A	B	C
50	3560-30550SXXXXX1	63.50	22.86	25.40
52	3560-30552SXXXXX1	66.04	22.86	25.40
64	3560-30564SXXXXX1	81.28	22.86	25.40



Http: www.wcon.com

WCON-Dongguan Tel: +86 769 85358920 Fax: +86 769 85358915 E-mail: sales@wcon.com
 WCON-Kunshan Tel: +86 512 57468408 Fax: +86 512 57468468 E-mail: sales@wcon.com

REV	DATE	MODIFICATION DESCRIPTION	CHANGE DIM
A0	2012/11/05	NEW	-----

OPERATION	DRAW	DATE	SCALE	FIT
XX	JYHuang	2012/11/05	±0.40	mm
XX	CHECK	DATE	±0.25	A4
X.XXX	APPROVE	DATE	±0.15	1/1
Angle	± 3'	PROJ.		

PART NO. SEE TAB
 TITLE: 2.54mm MACHINED ADAPTER CONNECTOR
 180° H=3.0 Row of Pitch 22.86
 Customer NO.