

HSHF

NOTES:

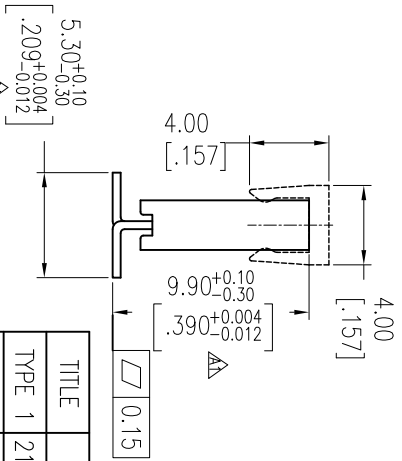
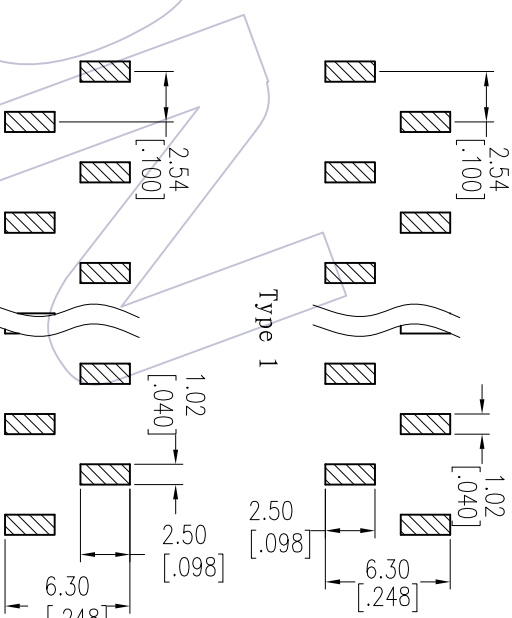
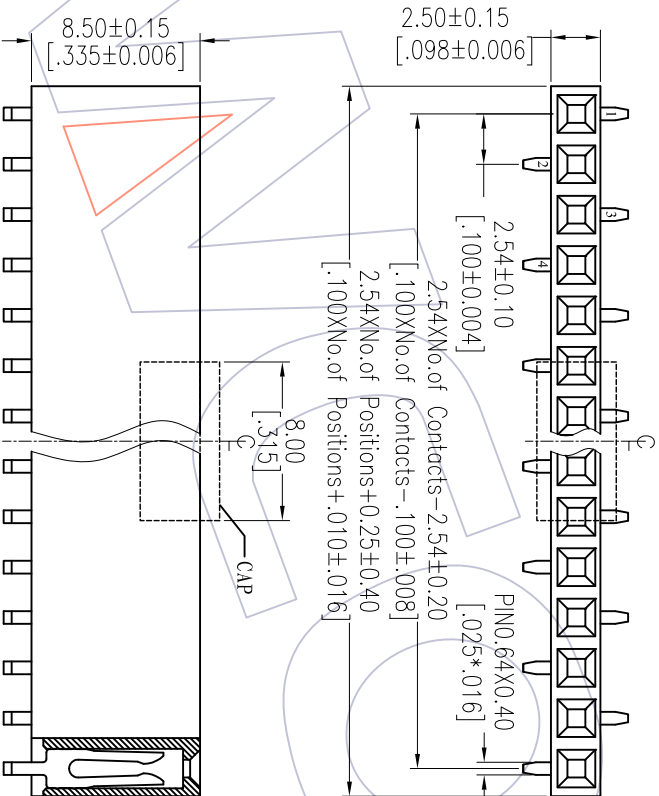
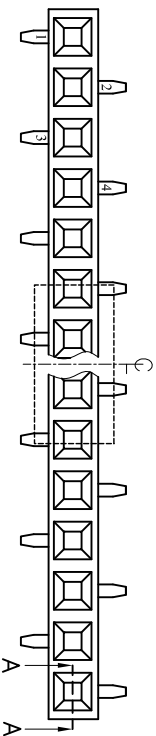
Rated Current:3.0AAMP
 Contact Resistance:20mΩ max
 Withstand Voltage:1000V AC/DC
 Insulation Resistance:1000MΩ min
 Operation Temperature:-40℃ to +105℃

Contact Material:Phosphor Bronze or Brass
 Contact Plating:Au Over Ni
 Insulator Material:PA9T+30%G.F UL94V-0

Ordering Information

2185 - 1 XX M XX C Y N X X

No. of Pins per ROW:42~40PIN

Contact Plating:
G0=Gold Flash
G3=10μ Gold
G4=15μ Gold
G5=30μ GoldS0=Gold Flash/Tin
S3=10μ Gold/Tin
S4=15μ Gold/Tin
S5=30μ Gold/Tin
SN=Tin
SME=Matte TinPacking:
T=Tube
R=Reel
P=Tube+CAP
Series No.
1=TYPE 1
2=TYPE 2

Item	Pitch	Mating
Standard	2.54	1115/1120/1125
Alternate		

REV	DATE	MODIFICATION DESCRIPTION
A1	2014/04/14	Modify drawing
A0	2012/08/15	NEW

OPERATION	DRAW	DATE	SCALE	FIT	PART NO.
XX	Wong	2014/04/14	mm		SBE TABLE
XX	CHECK	DATE	A4		TITLE:
XX	APPROVE	DATE	1/1		PH2.54 SINGLE ROW 180° SMT
Angle					Customer NO.
± 3'					
DIM					
TOL					

TITLE	PART NO.
TYPE 1	2185-1XXMXXCYNX1
TYPE 2	2185-1XXMXXCYNX2

WCON

Http: www.wcon.com

WCON-Dongguan

Tel: +86 769 85358920

Fax: +86 769 85358915

E-mail: sales@wcon.com

WCON-Kunshan

Tel: +86 512 57468408

Fax: +86 512 57468468

E-mail: sales@wcon.com