

HSF

Recommended P.C.B Layout(Top Side)
(PCB BOARD TOLERANCE±0.05)

NOTES:
 Current Rating: 3.0AMP
 Contact Resistance: 20mΩ Max
 Withstand Voltage: 1000V AC/DC
 Insulation Resistance: 1000MΩ Min
 Operation Temperature: -40°C to +105°C

Contact Material: Phosphor Bronze
 Contact plating: Au Or Sn over Ni
 Insulator Material: PBT+30%G.F UL94V-0

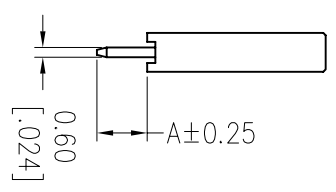
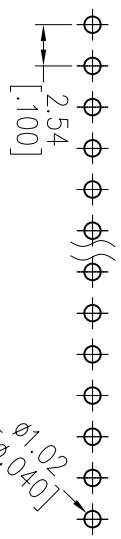
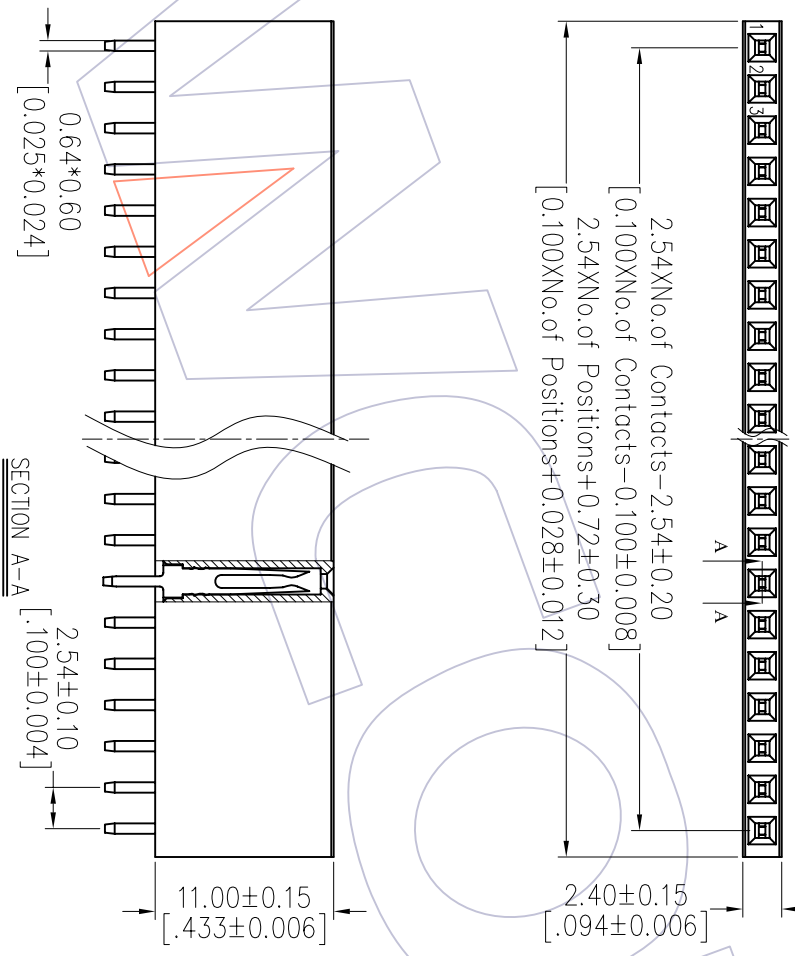
Ordering Information

2111A-1XXSXXAYNX1

No. of Pins per ROW: 02~40PIN
 Contact Plating:
 G0=Gold Flash
 G3=10μ"Gold
 G4=15μ"Gold
 G5=30μ"Gold
 S0=Gold Flash/Tin
 S3=0μ"Gold/Tin
 S4=15μ"Gold/Tin
 S5=30μ"Gold/Tin
 SN=Tin
 SM=Matte Tin

Packing:
 T=Tube
 A=Tray
 P=Tube+Cap

Item	Pitch	Mating
Standard	2.54	1115/1120/1125
Alternate		



Dimension antitheses list

ITEM	A
Standard	3.10
Alternate	

REV	DATE	MODIFICATION DESCRIPTION
A0	2012/08/23	NEW

OPERATION	DRAW	DATE	SCALE	FIT	PART NO.
XX	JYHuang	2012/08/23	±0.40	mm	2111A-1XXSXXAYNX1
XX	CHECK	DATE	±0.25	A4	TITLE: FH2.54mm SINGLE ROW 180° DIP
X.XXX	Angle	± 3°	±0.15	SHEET 1/1	Customer NO.
CHANGE	DIM	TOL	APPROVE	PROJ.	

WCON

Http: www.wcon.com
 WCON-Dongguan
 Tel: +86 769 85358920
 Fax: +86 769 85358915
 E-mail: sales@wcon.com
 WCON-Kunshan
 Tel: +86 512 57468408
 Fax: +86 512 57468468
 E-mail: sales@wcon.com