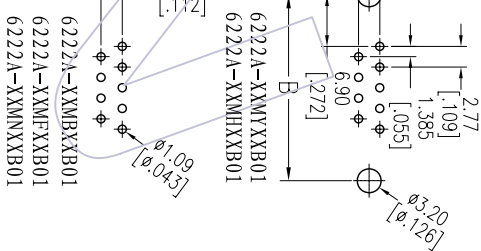
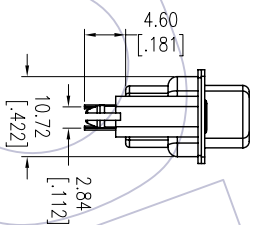
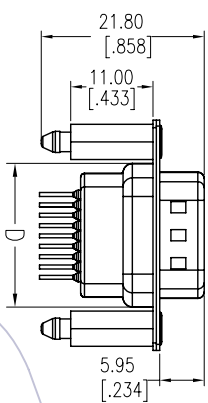
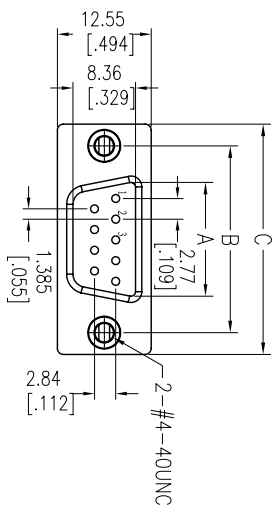


# HSF

Recommended P.C.B Layout(Top Side)  
(PCB BOARD TOLERANCE±0.05)

NOTES:  
 Current Rating: 3.0AMP  
 Contact Resistance: 20mΩ Max  
 Withstand Voltage: 500V AC/Minute  
 Insulation Resistance: 1000MΩ Min  
 Operation Temperature: -55°C to +105°C

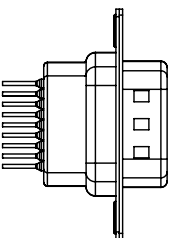
Contact Material: Brass  
 Contact plating: Au Or Sn over Ni  
 Insulator Material: PBT+30%G.F UL94V-0  
 Shell: Cold Roller Steel, Ni Or Sn Plated  
 Nut: Brass, Sn Over Ni Plated



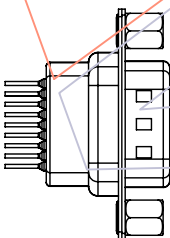
## Ordering Information

6222A-XX M X XX B 01

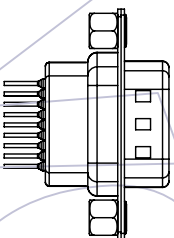
No. of Pins 09, 13, 25, 37P  
 Type Y=With Back Fork S0=Gold Flash/Tin B:Black  
 B=With Back Nut S3=10μ"Gold/Tin U:Blue  
 F=With Front Nut S4=15μ"Gold/Tin  
 N=Without Fork S5=30μ"Gold/Tin  
 Without Nut SN=Tin  
 H=With Back Fork With Screw



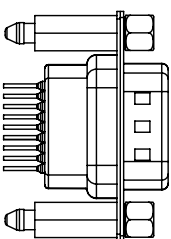
6222A-XXMFXXB01



6222A-XXMFXXB01



6222A-XXMBXXB01



6222A-XXMHXXB01

No. of Positions	DIM "A"	DIM "B"	DIM "C"	DIM "D"
09	16.92	24.99	30.81	19.28
15	25.25	33.32	39.14	27.65
25	38.96	47.04	53.04	41.30
37	55.42	63.50	69.32	57.44

# WCON

Http: www.wcon.com

WCON-Dongguan

Tel: +86 769 85358920

Fax: +86 769 85358915

E-mail: sales@wcon.com

WCON-Kunshan

Tel: +86 512 57468408

Fax: +86 512 57468468

E-mail: sales@wcon.com

REV	DATE	MODIFICATION DESCRIPTION	CHANGE
A0	2012/12/04	NEW	-----

OPERATION	DRAW	DATE	SCALE	FIT
XX	JYHuang	2012/12/04	UNIT	mm
XX	CHECK	DATE	SIZE	A4
XXX	±0.25	DATE	SHEET	1/1
XXX	±0.15	DATE	PROJ.	
Angle	± 3'	DATE		
DIM	TOL	DATE		

PART NO.	TITLE:
6222A-XXMFXXB01	D-SUB MALE DUAL ROW 180° DIP
Customer NO.	