

HSF

Recommended P.C.B Layout(Top Side)
(PCB BOARD TOLERANCE±0.05)

NOTES:

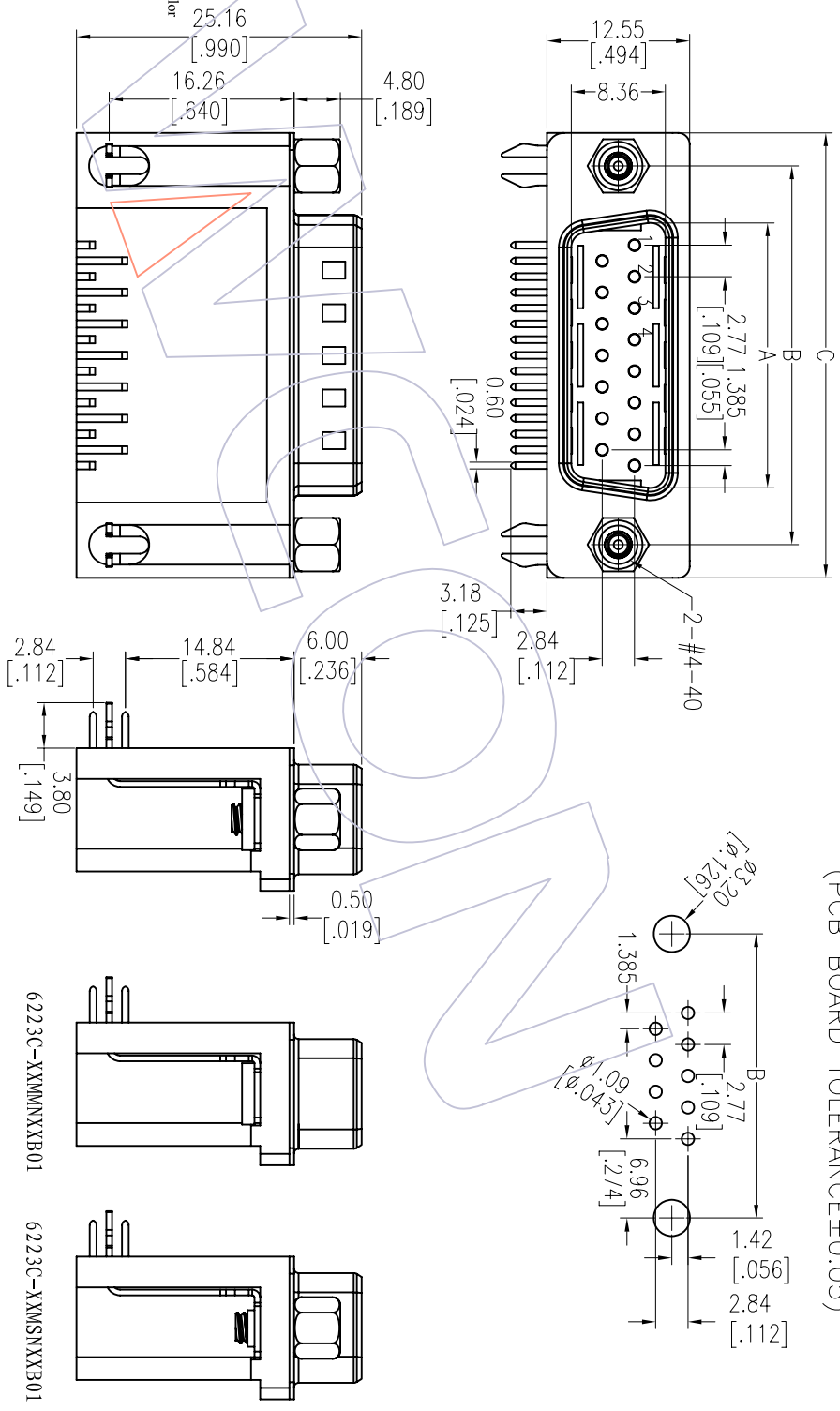
Current Rating: 3.0AMP
 Contact Resistance: 25mΩ Max
 Withstand Voltage: 500V AC/DC
 Insulation Resistance: 1000MΩ Min
 Operation Temperature: -55°C to +105°C

Contact Material: Brass
 Contact plating: Au Or Sn over Ni
 Insulator Material: PBT+30%G.F UL94V-0
 Sheet: Cold Roller Steel, Ni Plated
 Revit: Brass, Sn Over Ni Plated
 Screw: Brass, Ni Plated

Ordering Information

6223C-XX M X N XX B 01

No. of Pins 09, 15, 25, 37P
 Product Type W=With Revit With Screw M=With Revit Without Screw
 Contact Plating Insulator Color
 S0=Cold Flash/Tin B=Black
 S3=10u"Cold/Tin U=Blue
 S4=15u"Cold/Tin
 S5=30u"Cold/Tin
 SN=Tin



No. of Positions	DIM "A"	DIM "B"	DIM "C"
09	16.92	24.99	30.81
15	25.25	33.32	39.14
25	38.96	47.04	53.04
37	55.42	63.50	69.32

REV	DATE	MODIFICATION DESCRIPTION	CHANGE	OPERATION	DRAW	DATE	SCALE	FIT	PART NO.	TITLE:	Customer NO.	WCON-Dongguan	WCON-Kunshan
A0	2012/12/06	NEW	---	XX	JYHuang	2012/12/06	mm	A4	6223C-XXMXNXXB01	D-SUB MALE CONNECTOR 14, 84 FOOTPRINT RIGHT ANGLE TYPE		Tel: +86 769 85358920 Fax: +86 769 85358915 E-mail: sales@wcon.com	Tel: +86 512 57468408 Fax: +86 512 57468468 E-mail: sales@wcon.com

WCON
 Http: www.wcon.com

