



HSF

NOTES:

Current Rating: 3.0AMP
 Contact Resistance: 20mΩ Max
 Withstand Voltage: 1000V AC/DC 
 Insulation Resistance: 1000MΩ Min
 Operation Temperature: -40°C to +105°C

Contact Material: Brass 
 Contact plating: Au Or Sn over Ni
 Insulator Material: PA9T+30%G.F UL94V-0

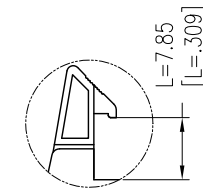
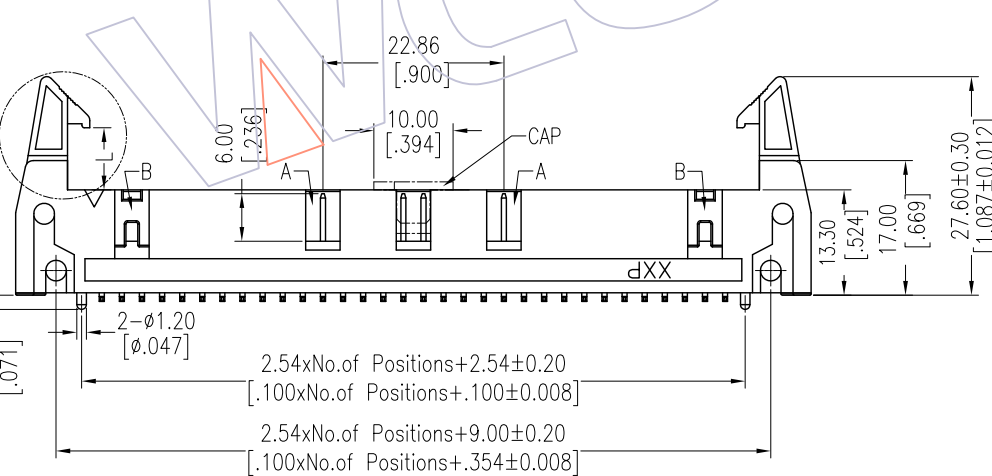
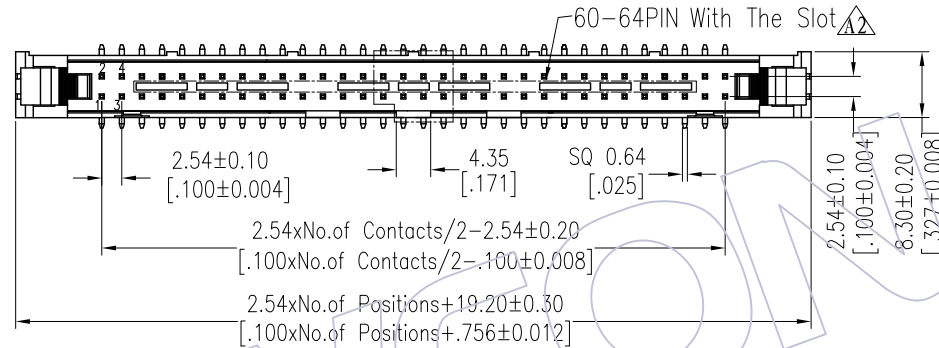
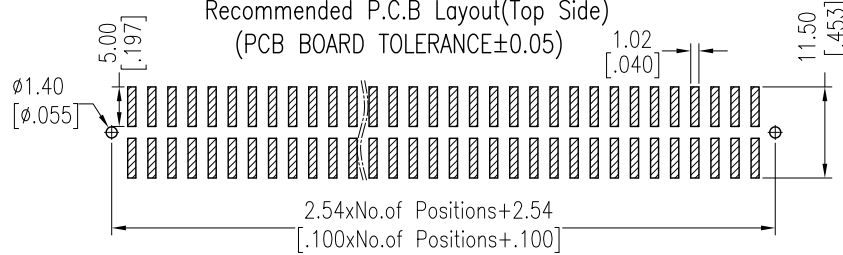
06P-18P Without Slot "A" and "B"
 20P-58P Without Slot "A", With Slot "B"
 60P-64P With Slot "A" and "B"

Ordering Information

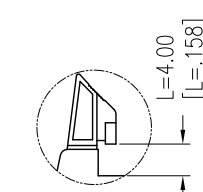
3210-XX M XX B X X 2

No. of Pins	Contact Plating	Insulator Color	Latch Type	Packing
06 24	G0=Gold Flash	B=Black	L=Long Latch	T=Tube
08 26	G3=10u"Gold		S=Short Latch	P=Tube+CAP
10 30	G4=15u"Gold		N=Without Latch	
12 34	G5=30u"Gold			
14 40	S0=Gold Flash/Tin			
16 50	S3=10u"Gold/Tin			
18 60	S4=15u"Gold/Tin			
20 64	S5=30u"Gold/Tin			
	SN=Tin			

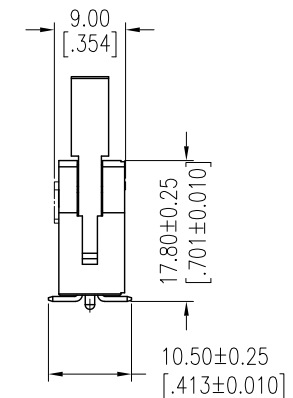
Recommended P.C.B Layout(Top Side) (PCB BOARD TOLERANCE±0.05)






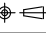
Long Latch



Short Latch



Item	Pitch	Mating
Standard	2.54	5211
Alternate		

REV	DATE	MODIFICATION DESCRIPTION	CHANGE	OPERATION	DRAW	DATE	SCALE	FIT	PART NO.
A3	2014/12/03	MODIFY		OPERATION	Allen	2014/12/03	UNIT	mm	3210-XXMXXBXX2
A2	2013/02/25	MODIFY		x.X ±0.40	CHECK		SHEET	1/1	TITLE:
A1	2012/12/19	MODIFY THE MATERIAL		x.XX ±0.25	APPROVE		PROJ.		2.54 EJECTOR HEADER SMT WITH POST
A0	2012/10/08	NEW	----	x.XXX ±0.15					Customer NO.
				Angle ± 3'					
				DIM TOL					



Http: www.wcon.com

WCON-Dongguan Tel: +86 769 85358920 Fax: +86 769 85358915 E-mail: sales@wcon.com	WCON-Kunshan Tel: +86 512 57468408 Fax: +86 512 57468468 E-mail: salesks@wcon.com
---	--