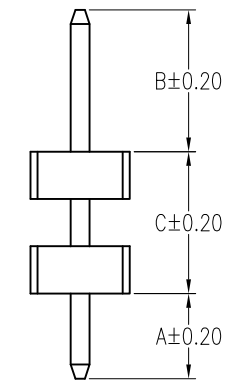
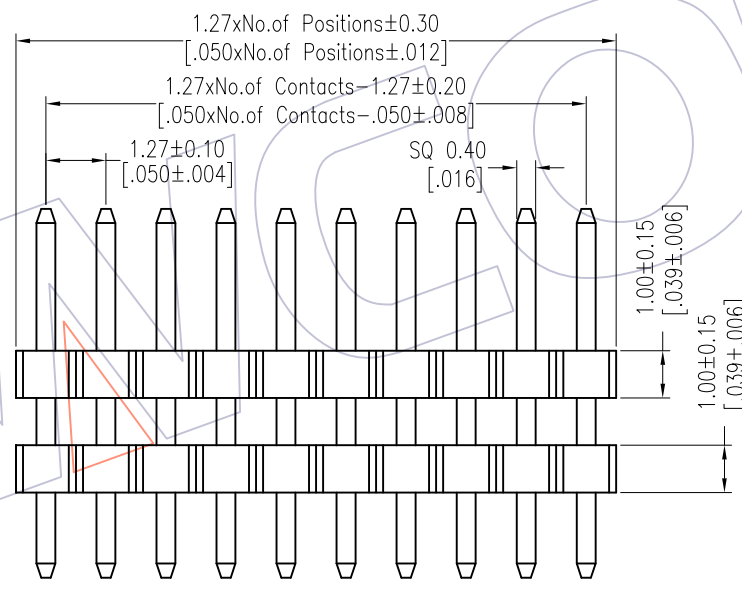
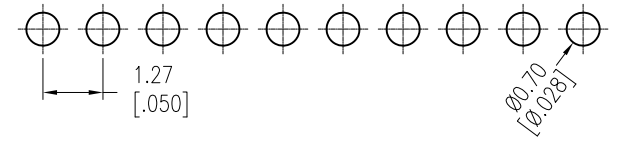
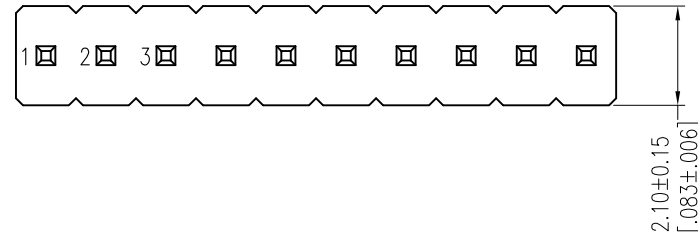


HSF

Recommended P.C.B Layout (Top Side)
(PCB BOARD TOLERANCE±0.05)

NOTES:
 Rated Current:1.0AMP.
 Contact Resistance:20mΩ Max.
 Withstand Voltage:500V AC/DC
 Insulation Resistance:1000MΩ Min.
 Operation Temperature:-40°C to +105°C

Contact Material:Brass
 Contact Plating:Au or Sn Over Ni
 Insulator Material:PA9T+33%G.F UL94V-0 BK



Ordering Information

1310-21 XX XX S XXX C A XX

| | | | | | |
|-------------|--|------------|-----------|---------|------------|
| No. of Pins | Contact Plating | Pin Length | Insulator | Packing | Series No. |
| 01~50 | G0=Gold Flash G3=10u"Gold G4=15u"Gold G5=30u"Gold | L=A+B+C | C=PA9T | A=Tray | 01~99 |
| | S0=Gold Flash/Tin S3=10u"Gold/Tin S4=15u"Gold/Tin S5=30u"Gold/Tin | | | | |
| | SN=Tin SM=Matte Tin | | | | |

| Item | Pin Length | A | B | C | Mating |
|-----------|------------|------|------|----|--------|
| Standard | -- | 1.80 | 1.90 | -- | 2321 |
| | -- | 1.80 | 3.00 | -- | 2334 |
| | -- | 1.80 | 4.00 | -- | 2344 |
| Alternate | | | | | |

| REV | DATE | MODIFICATION DESCRIPTION | CHANGE | OPERATION | DRAW | DATE | SCALE | Fit | PART NO. |
|-----|------------|--------------------------|--------|-------------|--------------|------------|-------|--------------|---|
| | | | | x.X ±0.40 | William Chen | 2018/01/12 | UNIT | mm [inch] | 1310-21XXXXXXCXXX |
| A1 | 2018/01/12 | MODIFY PART NO. | ----- | x.XX ±0.25 | CHECK | DATE | SIZE | A4 | TITLE: |
| AO | 2012/03/12 | NEW | ----- | x.XXX ±0.15 | APPROVE | DATE | SHEET | 1/1 | 1.27 Pin Header, SINGLE ROW, S/T, DOUBLE PLASTIC, H=1.0 |
| | | | | Angle ± 3' | | | PROJ. | Customer NO. | |
| | | | | DIM TOL | | | | | |

WCON
 Http: www.wcon.com

| | |
|---|--|
| WCON-Dongguan Tel: +86 769 85358920 Fax: +86 769 85358915 E-mail: sales@wcon.com | WCON-Kunshan Tel: +86 512 57468408 Fax: +86 512 57468468 E-mail: salesks@wcon.com |
|---|--|