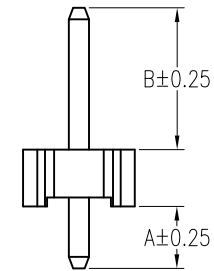
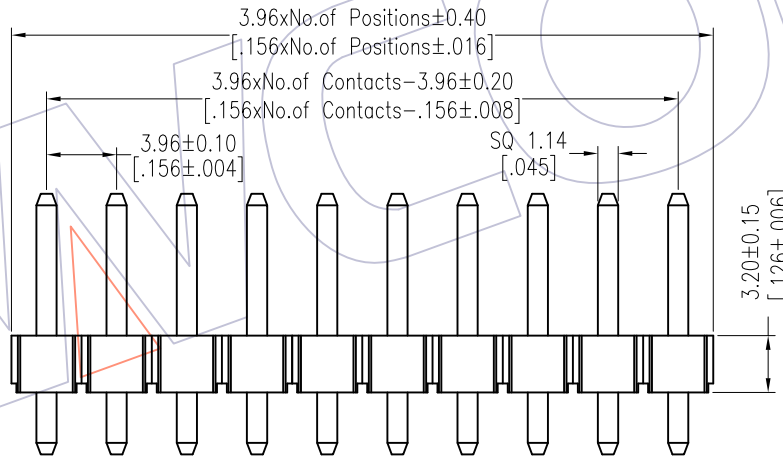
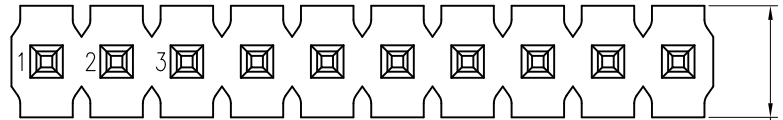
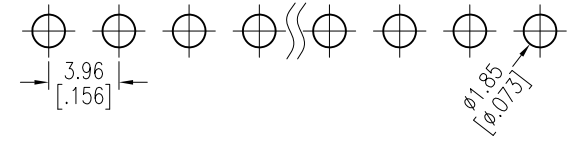


HSF

Recommended P.C.B Layout (Top Side)
(PCB BOARD TOLERANCE±0.05)

NOTES:
 Rated Current:7.0AMP.
 Contact Resistance:20mΩ Max.
 Withstand Voltage:1000V AC/DC
 Insulation Resistance:1000MΩ Min.
 Operation Temperature:-40°C to +105°C

Contact Material:Brass
 Contact Plating:Sn Over Ni
 Insulator Material:LCP+30%G.F UL94V-0 BK



Ordering Information

1832-11 XX XX S XXX D 0 XX

No. of Pins Contact Plating Pin Length Insulator Packing Series No.
 02-20 SN=Tin L=A+B+3.2 D=LCP 0=PE Bag 01-99
 SM=Matte Tin Std:147=14.7

Item	Pin Length	A	B	Mating
Standard	14.7	3.50	8.00	2889
Alternate				

OPERATION	DRAW	DATE	SCALE	Fit	PART NO.
x.X ±0.40	William Chen	2018/01/23	UNIT	mm [inch]	1832-11XXXXXXDXDX
x.XX ±0.25	CHECK	DATE	SIZE	A4	TITLE:
x.XXX ±0.15	APPROVE	DATE	SHEET	1/1	3.96 Pin Header, SINGLE ROW, S/T, H=3.2
Angle ± 3'			PROJ.	⊕	Customer NO.
DIM TOL					

WCON
 Http: www.wcon.com

WCON-Dongguan Tel: +86 769 85358920
 WCON-Kunshan Tel: +86 512 57468408
 Fax: +86 769 85358915
 Fax: +86 512 57468468
 E-mail: sales@wcon.com
 E-mail: salesks@wcon.com