

HSF

NOTES:

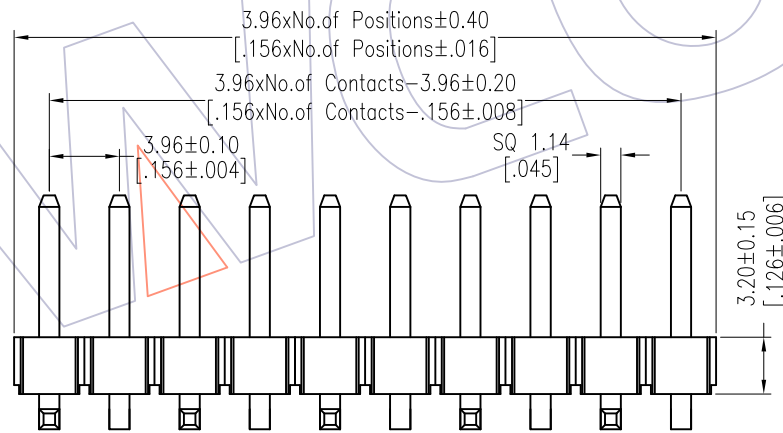
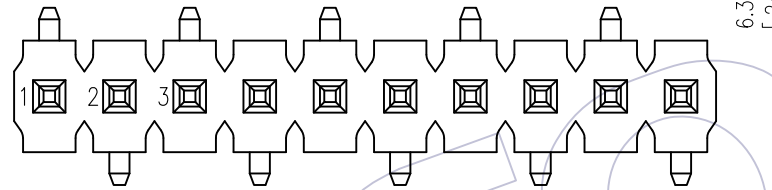
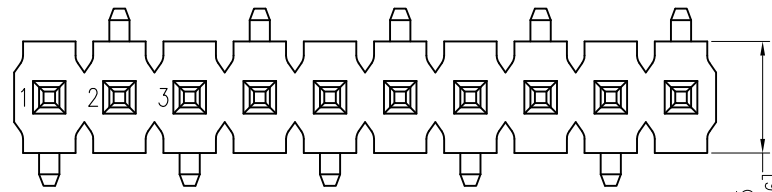
Rated Current:7.0AMP.
 Contact Resistance:20mΩ Max.
 Withstand Voltage:1000V AC/DC
 Insulation Resistance:1000MΩ Min.
 Operation Temperature:-40°C to +105°C

Contact Material:Brass
 Contact Plating:Sn Over Ni
 Insulator Material:LCP+30%G.F UL94V-0 BK

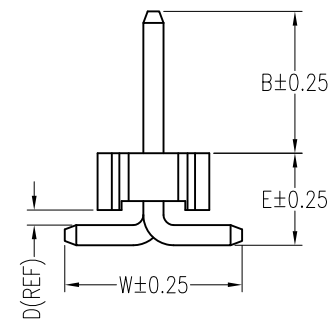
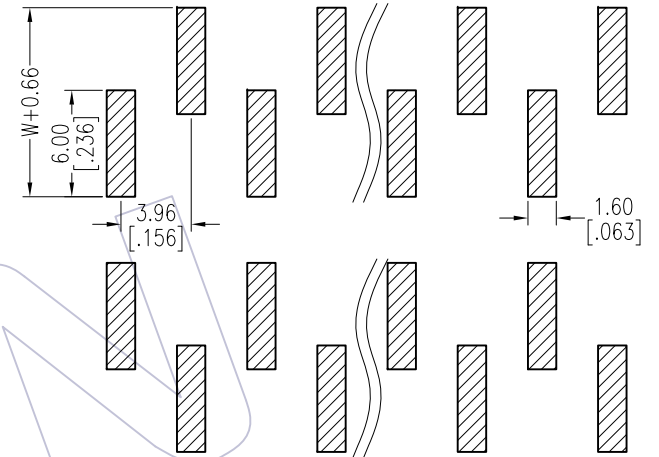
Ordering Information

1832-11 XX XX M XXX D 0 XX

| | | | | | |
|-------------|------------------------|--------------------------------------|-----------|------------------------------|------------|
| No. of Pins | Contact Plating | Pin Length | Insulator | Packing | Series No. |
| 02-20 | SN=Tin SM=Matte Tin | L=B+D+3.2+ $\frac{W}{2}$ Std:17.0 | D=LCP | 0=PE Bag A=Tray T=Tube | 01-99 |



Recommended P.C.B Layout (Top Side) (PCB BOARD TOLERANCE±0.05)



| Item | Pin Length | W | E | B | Mating |
|-----------|------------|-------|------|------|--------|
| Standard | 17.0 | 10.00 | 5.19 | 8.00 | 2889 |
| Alternate | | | | | |

| REV | DATE | MODIFICATION DESCRIPTION | CHANGE | OPERATION | DRAW | DATE | SCALE | Fit | PART NO. |
|-----|------------|--------------------------|--------|-------------|--------------|------------|-------|-----------|--|
| | | | | x.X ±0.40 | William Chen | 2018/01/23 | UNIT | mm [inch] | 1832-11XXXXMXXDXXX |
| A1 | 2018/01/23 | MODIFY PART NO. | ----- | x.XX ±0.25 | CHECK | DATE | SIZE | A4 | TITLE: |
| A0 | 2012/06/25 | NEW | ----- | x.XXX ±0.15 | APPROVE | DATE | SHEET | 1/1 | 3.96 Pin Header, SINGLE ROW, SMT, H=3.2 |
| | | | | Angle ± 3' | | | PROJ. | | Customer NO. |
| | | | | DIM TOL | | | | | |



Http: www.wcon.com

| | |
|---|--|
| WCON-Dongguan Tel: +86 769 85358920 Fax: +86 769 85358915 E-mail: sales@wcon.com | WCON-Kunshan Tel: +86 512 57468408 Fax: +86 512 57468468 E-mail: salesks@wcon.com |
|---|--|