

HSF

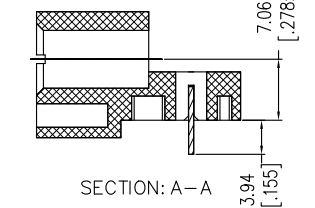
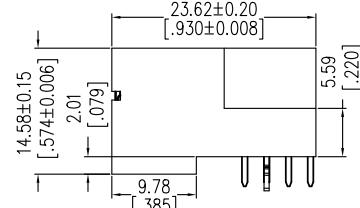
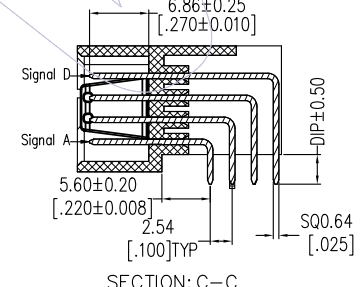
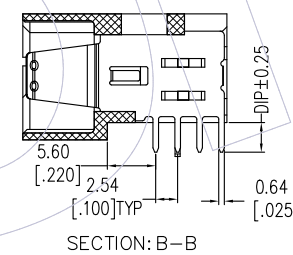
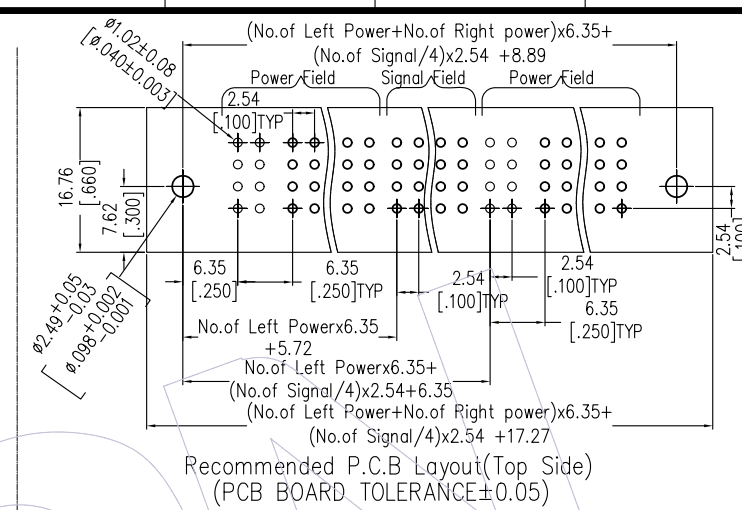
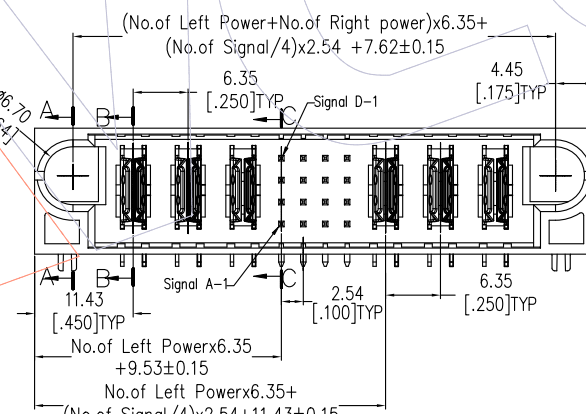
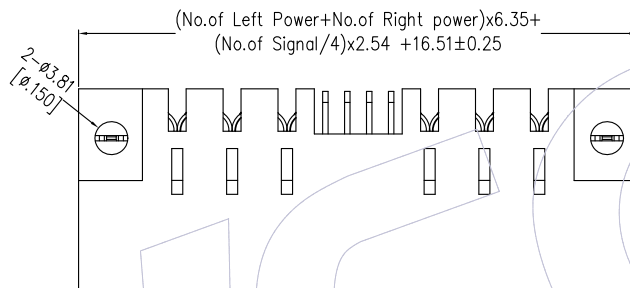
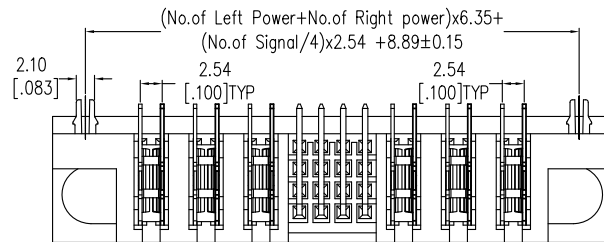
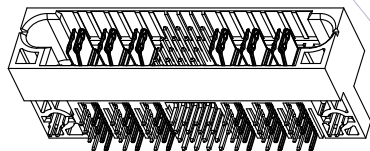
NOTES:

1. Insulator material: PA9T+33%G.F, UL94 V-0;
2. Terminal material: Copper Alloy;
Terminal Plating: Au/Sn Plated Over Nickel ;
3. Rated Voltage: 50V;
4. Rated Current: Power 30A; Signal 2.5A;
5. Contact Resistance:
Power 0.7mΩ Max; Signal 20mΩ Max;
6. Insulation Resistance: DC500V
Power 10000MΩ Min; Signal 500MΩ Min;
7. Insulation Withstand Voltage:
Power 2500VAC/1min; Signal 1000VAC/1min ;
8. Durability :200 cycling;
9. Operation Temperature: -20°C to +105°C;

Ordering Information:

P1MR A - XX XX XX XX XX X X A 1

No. Left Power: 03=3Pin
 20=20Pin
 No. Right Power: 03=3Pin
 20=20Pin
 Tail Options(DIP Type):
 A=3.43mm
 B=2.29mm
 C=4.19mm
 Packing:
 A=Tray
 No. Signal:
 04=4Pin
 08=8Pin
 A0=100Pin
 A1=104Pin
 B3=148Pin
 Power Contact Plated:
 S3=10u" Gold /Tin
 S4=15u" Gold /Tin
 S5=30u" Gold /Tin
 w3=10u" Gold /Matte Tin
 w4=15u" Gold /Matte Tin
 w5=30u" Gold /Matte Tin
 Signal Contact Plated:
 S3=10u" Gold /Tin
 S4=15u" Gold /Tin
 S5=30u" Gold /Tin
 w3=10u" Gold /Matte Tin
 w4=15u" Gold /Matte Tin
 w5=30u" Gold /Matte Tin
 Fixed Mode:
 M: W/T Lock
 N: W/O Lock



| OPERATION | | DRAW XSR | DATE 18/08/30 | SCALE | FIT | PART NO. P1MRA-XXXXXXXXXXA1 |
|-----------|------------|--------------------------|---------------|-------|-----------|--|
| x.x | ±0.40 | | | | | |
| A1 | 2018/08/30 | MODIFY P/N | CHECK | DATE | UNIT mm | TITLE: PSP TYPE A 90° DIP MALE (TYPE-1:Power+2.54Signal+Power) |
| A0 | 2018/07/30 | NEW | APPROVE | DATE | SIZE A4 | Customer NO. |
| REV | DATE | MODIFICATION DESCRIPTION | CHANGE | | SHEET 1/1 | |
| | | | | | PROJ. | |

WCON
 Http: www.wcon.com
 WCON-Dongguan Tel: +86 769 85358920
 WCON-Kunshan Tel: +86 512 57468408
 Fax: +86 769 85358915
 Fax: +86 512 57468468
 E-mail: sales@wcon.com
 E-mail: sales@wcon.com