

HSF

NOTES:

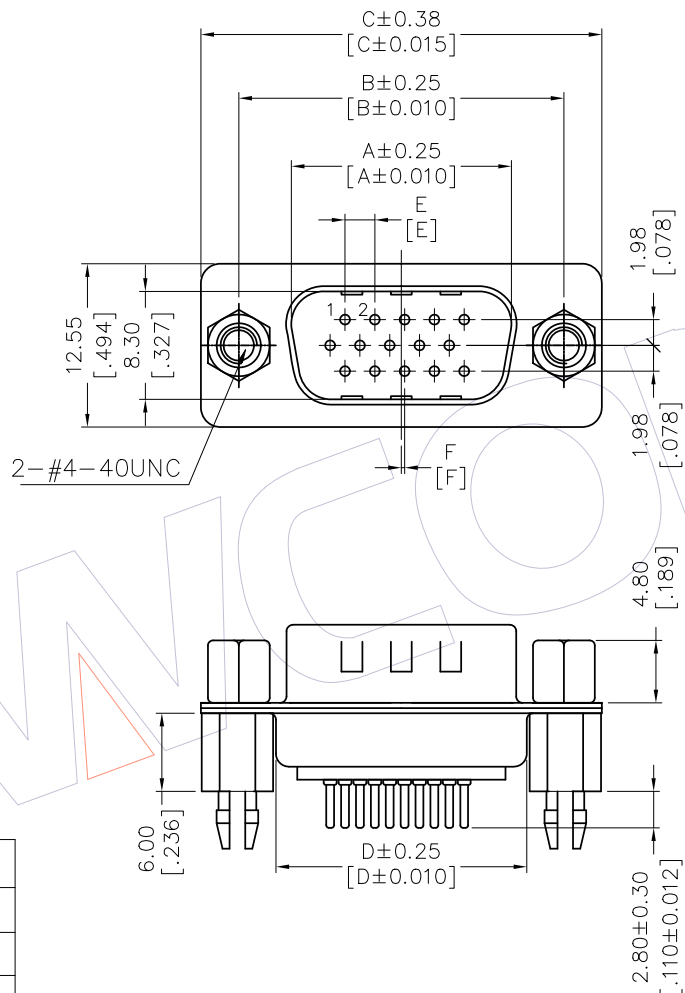
Current Rating: 3.0AMP
 Contact Resistance: 20mΩ Max
 Withstand Voltage: 500V AC/Minute
 Insulation Resistance: 1000MΩ Min
 Operation Temperature: -55℃ to +105℃

Housing Material: PBT+30%GF(UL94V-0)
 Contact Material: Brass
 Contact plating: Au or Sn over Ni
 Shell: SPCC, Ni or Sn Plated
 Fork: Brass, Tin Over Ni Plated
 Screw: Brass, Ni Plated

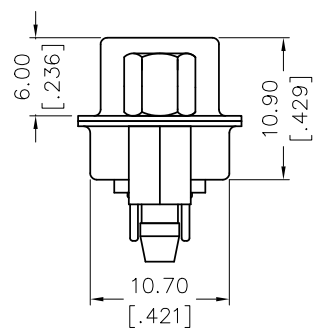
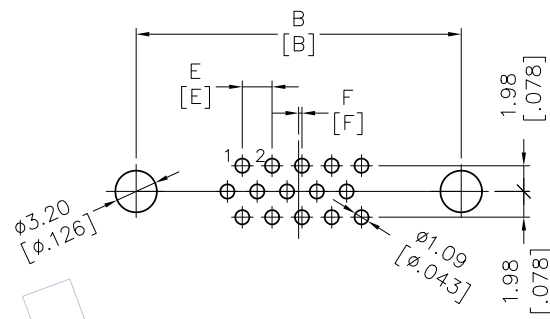
Ordering Information

6212- XX MH XX X0X

No. of Pins:	Type:	Contact Plating:	Insulator Color:
15P	H: With Front Nut	S0=Gold Falsh/Tin	B= Black
26P	With Back Fork	S1=3u"Gold/Tin	W= White
44P		S2=5u"Gold/Tin	U= Blue
62P		S3=10u"Gold/Tin	
		S4=15u"Gold/Tin	
		S5=30u"Gold/Tin	



RECOMMENDED PCB LAYOUT
 TOLERANCE IS ±0.05



PINS	A	B	C	D	E	F
15	16.92	24.99	30.81	19.28	2.29	0.25
26	25.25	33.32	39.20	27.70	2.29	0.51
44	38.96	47.04	53.10	41.10	2.29	0.51
62	55.42	63.50	69.40	57.50	2.41	0.58

			OPERATION	DRAW	DATE	SCALE	1:1	PART NO.
			X.X	ZHLL	2019.03.20	UNIT	mm	6212-XXMHXXX0X
			X.XX	CHECK	DATE	SIZE	inch	TITLE:
A1	2019.03.20		X.XXX	APPROVE	DATE	SHEET	A4	HD-SUB MALE
A0	2016.12.24	NEW	Angle			PROJ.	1/1	THREE ROW 180° TYPE
REV	DATE	MODIFICATION DESCRIPTION	DIM					Customer NO.
			TOL					

WCON
 Http: www.wcon.com

WCON-Dongguan
 Tel: +86 769 85358920
 Fax: +86 769 85358915
 E-mail: sales@wcon.com

WCON-Kunshan
 Tel: +86 512 57468408
 Fax: +86 512 57468468
 E-mail: wconks@wcon.com